

**APPENDIX 13:****NOISE & VIBRATION****Annex A: Façade Noise Levels****Annex B: High Demand Growth Scenario**

**APPENDIX 13: NOISE & VIBRATION****Annex A: Façade Noise Levels**

## ANNEX A - FAÇADE NOISE LEVELS

Ref	Address	Predicted Sound Level, $L_{A10,18h}$ dB			
		2021DM	2035DM	2021DS	2035DS
1	56 Carlisle Road Town Parks	69.2	69.4	68.6	68.8
2	62 Carlisle Road Town Parks	63.5	63.7	63.7	63.9
3	58 Carlisle Road Town Parks	56.9	57.2	57.0	57.2
4	70 Victoria Parade Town Parks	59.2	59.5	59.5	59.8
5	22 North Queen Street Town Parks	62.1	62.4	62.8	63.1
6	18 North Queen Street Town Parks	72.6	72.9	73.2	73.5
7	54 Carlisle Road Town Parks	70.4	70.6	69.8	70.0
8	86 Victoria Parade Town Parks	59.9	60.2	60.3	60.6
9	74 Victoria Parade Town Parks	59.4	59.8	59.9	60.2
10	50 Carlisle Road Town Parks	73.4	73.6	72.5	72.7
11	20 North Queen Street Town Parks	72.4	72.7	73.0	73.4
12	68 Victoria Parade Town Parks	60.2	60.5	60.6	60.8
13	72 Victoria Parade Town Parks	58.9	59.2	59.4	59.7
14	82 Victoria Parade Town Parks	61.7	62.1	62.1	62.4
15	76 Victoria Parade Town Parks	57.5	57.8	57.8	58.1
16	52 Carlisle Road Town Parks	71.5	71.8	70.9	71.1
17	45 Little Georges Street Town Parks	61.9	62.3	61.4	61.7
18	23 Little Georges Street Town Parks	60.5	60.8	60.6	60.8
19	25 Little Georges Street Town Parks	61.5	61.8	61.1	61.4
20	11 Little Georges Street Town Parks	61.1	61.4	61.4	61.7
21	27 Little Georges Street Town Parks	62.0	62.3	61.6	61.9
22	15 Little Georges Street Town Parks	60.7	61.0	60.9	61.2
23	3 Little Georges Street Town Parks	61.2	61.5	61.6	61.9
24	107 North Queen Street Town Parks	72.9	73.2	73.7	74.1
25	3 Molyneaux Street Town Parks	61.3	61.6	61.3	61.6
26	7 Molyneaux Street Town Parks	60.9	61.2	60.8	61.1
27	1 Molyneaux Street Town Parks	62.0	62.4	62.0	62.4
28	1 Little Georges Street Town Parks	61.6	61.9	61.9	62.1
29	47 Little Georges Street Town Parks	60.2	60.5	59.6	59.9
30	7 Little Georges Street Town Parks	61.1	61.4	61.5	61.8
31	13 Southwell Street Town Parks	60.7	61.0	60.9	61.1

Ref	Address	Predicted Sound Level, LA10,18h dB			
		2021DM	2035DM	2021DS	2035DS
32	14 Little Georges Street Town Parks	61.7	62.0	62.1	62.3
33	41 Little Georges Street Town Parks	61.7	62.0	61.3	61.6
34	11 Moffatt Street Town Parks	60.6	61.0	60.8	61.1
35	37 Little Georges Street Town Parks	61.7	62.0	61.2	61.5
36	2 Little Georges Street Town Parks	59.8	60.2	60.4	60.7
37	12 Little Georges Street Town Parks	59.2	59.5	59.5	59.8
38	20 Little Georges Street Town Parks	60.3	60.6	60.5	60.7
39	10 Southwell Street Town Parks	61.0	61.4	60.9	61.3
40	105 North Queen Street Town Parks	72.9	73.2	73.6	74.0
41	12 Southwell Street Town Parks	61.0	61.5	60.9	61.3
42	9 Molyneaux Street Town Parks	63.7	64.0	61.7	62.0
43	16 Southwell Street Town Parks	61.1	61.5	61.3	61.6
44	2 Moffatt Street Town Parks	62.2	62.5	62.4	62.7
45	33 Little Georges Street Town Parks	61.8	62.1	61.4	61.7
46	14 Southwell Street Town Parks	61.1	61.5	60.9	61.4
47	18 Southwell Street Town Parks	61.5	61.8	61.5	61.8
48	17 Southwell Street Town Parks	62.1	62.4	62.1	62.4
49	103 North Queen Street Town Parks	66.7	67.0	67.4	67.8
50	13 Little Georges Street Town Parks	62.4	62.7	62.5	62.8
51	19 Little Georges Street Town Parks	60.9	61.2	60.9	61.2
52	3 Moffatt Street Town Parks	62.1	62.4	61.9	62.2
53	109 North Queen Street Town Parks	72.9	73.2	73.7	74.1
54	20 Southwell Street Town Parks	62.1	62.4	62.2	62.5
55	4 Moffatt Street Town Parks	61.9	62.2	62.1	62.3
56	15 Southwell Street Town Parks	61.0	61.3	61.1	61.4
57	1 Moffatt Street Town Parks	61.9	62.2	61.8	62.1
58	18 Little Georges Street Town Parks	62.1	62.4	62.1	62.4
59	5 Molyneaux Street Town Parks	60.3	60.6	60.3	60.6
60	31 Little Georges Street Town Parks	59.9	60.2	59.8	60.0
61	1 Short Street Town Parks	56.6	57.0	56.7	57.0
62	5 Short Street Town Parks	57.0	57.4	57.0	57.3
63	11 Short Street Town Parks	61.8	62.1	61.7	62.0
64	7 Short Street Town Parks	57.1	57.5	57.1	57.4

Ref	Address	Predicted Sound Level, LA10,18h dB			
		2021DM	2035DM	2021DS	2035DS
65	3 Short Street Town Parks	57.1	57.4	57.1	57.4
66	9 Short Street Town Parks	61.6	62.0	61.6	61.9
67	15 Short Street Town Parks	62.0	62.3	61.9	62.2
68	7 Clifton House Mews Town Parks	59.0	59.3	59.3	59.7
69	4 Clifton House Mews Town Parks	60.5	60.7	60.7	61.0
70	95 North Queen Street Town Parks	73.0	73.3	73.7	74.1
71	4 Fishers Court Town Parks	60.2	60.5	60.4	60.7
72	5 Clifton House Mews Town Parks	60.1	60.4	60.4	60.7
73	3 Clifton House Mews Town Parks	59.4	59.7	59.7	60.0
74	87 North Queen Street Town Parks	72.6	73.0	73.3	73.7
75	89 North Queen Street Town Parks	72.7	73.0	73.4	73.8
76	6 Clifton House Mews Town Parks	59.5	59.8	59.9	60.2
77	93 North Queen Street Town Parks	72.8	73.2	73.5	73.9
78	91 North Queen Street Town Parks	72.7	73.1	73.5	73.8
79	85 North Queen Street Town Parks	72.5	72.9	73.3	73.7
80	18 Thomas Street Town Parks	64.9	65.3	64.2	64.5
81	3 Lancaster Street Town Parks	58.8	59.2	58.8	59.1
82	2 Portland Place Town Parks	59.2	59.5	59.3	59.6
83	1 Lancaster Street Town Parks	59.5	59.9	59.3	59.6
84	11 Lancaster Street Town Parks	59.6	59.9	59.4	59.7
85	1 Thomas Street Town Parks	59.6	59.9	59.5	59.8
86	3 Portland Place Town Parks	60.0	60.4	60.2	60.4
87	5 Lancaster Street Town Parks	57.4	57.8	57.3	57.7
88	19 Portland Place Town Parks	59.3	59.6	59.5	59.8
89	16 Thomas Street Clooney	61.6	61.9	61.3	61.6
90	14 Thomas Street Town Parks	63.8	64.2	63.7	64.0
91	6 Portland Place Town Parks	58.1	58.4	58.3	58.6
92	11 Thomas Street Town Parks	58.6	58.9	58.5	58.8
93	16 Portland Place Town Parks	59.9	60.3	60.2	60.5
94	7 Thomas Street Town Parks	63.4	63.8	62.0	62.3
95	4 Thomas Street Town Parks	59.0	59.4	58.9	59.2
96	20 Portland Place Town Parks	59.9	60.2	60.0	60.3
97	9 Thomas Street Town Parks	63.3	63.6	61.4	61.6
98	12 Thomas Street Town Parks	68.8	69.2	67.3	67.7

Ref	Address	Predicted Sound Level, LA10,18h dB			
		2021DM	2035DM	2021DS	2035DS
99	1 Portland Place Town Parks	58.5	58.8	58.7	58.9
100	9 Lancaster Street Town Parks	59.3	59.7	59.2	59.5
101	17 Portland Place Town Parks	59.5	59.9	59.8	60.1
102	6 Thomas Street Town Parks	63.5	63.8	63.7	64.0
103	3 Thomas Street Town Parks	59.3	59.6	59.2	59.5
104	5 Thomas Street Town Parks	60.1	60.5	60.1	60.3
105	4 Portland Place Town Parks	62.3	62.7	60.8	61.1
106	14 Portland Place Town Parks	61.6	61.9	61.8	62.1
107	7 Lancaster Street Town Parks	57.8	58.1	57.7	58.0
108	15 Portland Place Town Parks	61.2	61.6	61.5	61.7
109	15 Thomas Street Town Parks	58.2	58.6	58.2	58.5
110	10 Thomas Street Town Parks	68.8	69.2	67.3	67.7
111	5 Portland Place Town Parks	58.6	58.9	58.6	58.8
112	18 Portland Place Town Parks	59.8	60.1	60.1	60.4
113	8 Thomas Street Town Parks	64.4	64.7	63.6	63.9
114	13 Lancaster Street Town Parks	56.7	57.0	56.7	57.0
115	2 Thomas Street Town Parks	59.7	60.1	59.5	59.8
116	97 North Queen Street Town Parks	68.9	69.2	69.8	70.2
117	101 North Queen Street Town Parks	71.9	72.3	72.6	73.0
118	Doorsteps Sandwich 15 Garmoyle Street Town Parks	73.9	74.3	74.4	74.8
119	17 Garmoyle Street Town Parks	73.9	74.2	74.4	74.7
120	19 Garmoyle Street Town Parks	73.9	74.2	74.4	74.8
121	21 Garmoyle Street Town Parks	73.8	74.2	74.4	74.8
122	23 Garmoyle Street Town Parks	73.8	74.2	74.5	74.9
123	5 Little Georges Street Town Parks	61.4	61.7	61.8	62.1
124	9 Little Georges Street Town Parks	61.7	62.0	62.0	62.3
125	17 Little Georges Street Town Parks	60.3	60.6	60.5	60.8
126	21 Little Georges Street Town Parks	61.0	61.3	61.0	61.3
127	8 Little Georges Street Town Parks	60.7	61.0	61.0	61.3
128	Cu Chulainn House Victoria Parade Town Parks	62.5	62.7	62.2	62.4
129	5 Moffatt Street Town Parks	61.4	61.8	61.6	61.8
130	29 Little Georges Street Town Parks	60.3	60.6	60.3	60.6
131	35 Little Georges Street Town Parks	61.8	62.1	61.3	61.6
132	39 Little Georges Street Town Parks	61.7	62.0	61.3	61.5

Ref	Address	Predicted Sound Level, LA10,18h dB			
		2021DM	2035DM	2021DS	2035DS
133	43 Little Georges Street Town Parks	62.0	62.3	61.4	61.7
134	8 Fishers Court Town Parks	59.7	60.0	60.0	60.3
135	6 Fishers Court Town Parks	59.7	60.1	60.1	60.4
136	122 Great Georges Street (McGurk's Way)	59.7	60.0	60.1	60.3
137	126 Great Georges Street (McGurk's Way)	61.4	61.7	61.2	61.5
138	22 Thomas Street Town Parks	63.7	64.0	63.1	63.4
139	9 Seaview Street Skegoneill	63.6	64.0	63.7	64.0
140	5 Mountcollyer Road Skegoneill	62.0	62.4	62.0	62.4
141	23 Mountcollyer Avenue Town Parks	59.7	60.1	59.7	60.1
142	13 Mountcollyer Avenue Town Parks	59.6	60.0	59.6	60.0
143	1 Mountcollyer Road Skegoneill	72.2	72.7	72.2	72.7
144	16 Parkmount Street Skegoneill	61.2	61.6	61.2	61.7
145	34 Parkmount Street Skegoneill	61.9	62.4	61.9	62.4
146	36 Parkmount Street Skegoneill	66.1	66.6	66.1	66.6
147	2 Mountcollyer Road Skegoneill	70.7	71.2	70.7	71.2
148	38 Mountcollyer Avenue Town Parks	73.1	73.6	73.1	73.6
150	10 Parkmount Street Skegoneill	63.1	63.4	63.1	63.5
151	24 Mountcollyer Road Skegoneill	62.4	62.7	62.4	62.8
152	11 Parkmount Street Skegoneill	61.0	61.3	61.0	61.4
153	25 Mountcollyer Road Town Parks	66.2	66.6	66.3	66.6
154	15 Parkmount Street Skegoneill	60.4	60.8	60.4	60.8
155	The Avenue 45 Mountcollyer Avenue Skegoneill	73.8	74.3	73.8	74.3
156	17 Mountcollyer Road Skegoneill	59.4	59.8	59.4	59.8
157	19 Mountcollyer Road Town Parks	58.4	58.8	58.5	58.8
158	42 Parkmount Street Skegoneill	68.8	69.3	68.8	69.3
159	68 Mountcollyer Avenue Town Parks	60.4	60.8	60.4	60.9
160	29 Parkmount Street Skegoneill	61.3	61.8	61.4	61.8
161	54 Mountcollyer Avenue Town Parks	71.2	71.7	71.2	71.7
162	10 Mountcollyer Road Skegoneill	59.7	60.2	59.8	60.2
163	32 Parkmount Street Skegoneill	64.7	65.2	64.7	65.2
164	12 Seaview Street Skegoneill	63.3	63.7	63.3	63.7
165	28 Seaview Street Skegoneill	58.7	59.1	58.7	59.1
166	11 Mountcollyer Avenue Town Parks	59.7	60.1	59.8	60.1
167	7 Parkmount Street Skegoneill	66.6	67.0	66.7	67.0

Ref	Address	Predicted Sound Level, LA10,18h dB			
		2021DM	2035DM	2021DS	2035DS
168	4 Parkmount Street Skegoneill	65.9	66.2	65.9	66.3
169	The Avenue 45 Mountcollyer Avenue Skegoneill	73.8	74.3	73.8	74.3
170	7 Mountcollyer Road Skegoneill	60.8	61.3	60.9	61.3
171	41 Mountcollyer Avenue Skegoneill	67.5	68.0	67.5	68.0
172	25 Mountcollyer Avenue Town Parks	59.9	60.3	59.9	60.3
173	49 Mountcollyer Avenue Skegoneill	66.3	66.8	66.3	66.8
174	18 Parkmount Street Skegoneill	59.5	59.9	59.5	60.0
175	17 Seaview Street Skegoneill	61.2	61.5	61.2	61.6
176	58 Mountcollyer Avenue Town Parks	66.0	66.5	66.0	66.5
177	20 Seaview Street Skegoneill	61.6	62.0	61.6	62.0
178	15 Seaview Street Skegoneill	61.4	61.7	61.4	61.8
179	17 Parkmount Street Skegoneill	60.3	60.7	60.3	60.7
180	7 Mountcollyer Avenue Town Parks	60.2	60.6	60.3	60.6
181	50 Limestone Road Town Parks	60.1	60.5	60.1	60.5
182	33 Mountcollyer Avenue Skegoneill	62.0	62.5	62.0	62.5
183	30 Parkmount Street Skegoneill	60.7	61.2	60.7	61.2
184	43 Mountcollyer Avenue Skegoneill	69.5	70.0	69.5	70.0
185	40 Parkmount Street Skegoneill	66.9	67.4	66.9	67.4
186	29 Mountcollyer Avenue Skegoneill	60.7	61.1	60.7	61.1
187	20 Parkmount Street Skegoneill	61.9	62.3	61.9	62.3
188	13 Seaview Street Skegoneill	61.8	62.2	61.8	62.2
189	22 Mountcollyer Avenue Town Parks	62.0	62.4	62.0	62.4
190	12 Parkmount Street Skegoneill	60.7	61.2	60.7	61.2
191	5 Mountcollyer Avenue Town Parks	60.6	61.0	60.7	61.0
192	6 Mountcollyer Road Skegoneill	62.9	63.4	62.9	63.4
193	66 Mountcollyer Avenue Town Parks	61.2	61.6	61.2	61.7
194	3 Mountcollyer Road Skegoneill	60.5	61.0	60.5	61.0
195	3 Mountcollyer Avenue Town Parks	61.1	61.4	61.1	61.5
196	16 Mountcollyer Road Skegoneill	59.0	59.4	59.1	59.5
197	53 Mountcollyer Avenue Skegoneill	64.8	65.3	64.8	65.3
198	56 Mountcollyer Avenue Town Parks	67.6	68.1	67.6	68.1
199	13 Mountcollyer Road Skegoneill	58.9	59.3	58.9	59.3
200	19 Mountcollyer Avenue Town Parks	59.4	59.8	59.4	59.8
201	28 Parkmount Street Skegoneill	59.0	59.5	59.0	59.5

Ref	Address	Predicted Sound Level, LA10,18h dB			
		2021DM	2035DM	2021DS	2035DS
202	31 Parkmount Street Skegoneill	62.0	62.4	62.0	62.4
203	16 Seaview Street Skegoneill	62.0	62.4	62.1	62.4
204	22 Seaview Street Skegoneill	61.4	61.8	61.4	61.8
205	12 Mountcollyer Road Skegoneill	60.5	60.9	60.5	60.9
206	24 Seaview Street Skegoneill	61.5	61.9	61.5	61.9
207	17 Mountcollyer Avenue Town Parks	59.4	59.8	59.4	59.8
208	9 Mountcollyer Avenue Town Parks	57.9	58.3	57.9	58.3
209	62 Mountcollyer Avenue Town Parks	63.2	63.7	63.2	63.7
210	70 Mountcollyer Avenue Town Parks	59.9	60.3	59.9	60.3
211	60 Mountcollyer Avenue Town Parks	64.5	64.9	64.5	65.0
212	14 Parkmount Street Skegoneill	60.8	61.3	60.8	61.3
213	14 Mountcollyer Road Skegoneill	58.1	58.5	58.2	58.6
214	26 Parkmount Street Skegoneill	62.9	63.3	62.9	63.3
215	18 Mountcollyer Road Skegoneill	61.7	62.0	61.7	62.1
216	15 Mountcollyer Avenue Town Parks	59.5	59.9	59.5	59.9
217	48 Limestone Road Town Parks	60.4	60.9	60.5	60.9
218	6 Parkmount Street Skegoneill	64.9	65.3	64.9	65.3
219	1 Mountcollyer Avenue Town Parks	63.9	64.3	63.9	64.3
220	8 Parkmount Street Skegoneill	63.9	64.3	64.0	64.3
221	64 Mountcollyer Avenue Town Parks	62.1	62.5	62.1	62.5
222	13 Parkmount Street Skegoneill	59.4	59.8	59.5	59.9
223	27 Mountcollyer Avenue Skegoneill	60.4	60.9	60.4	60.9
224	9 Mountcollyer Road Skegoneill	59.8	60.2	59.8	60.2
225	33 Parkmount Street Skegoneill	62.8	63.3	62.8	63.3
226	24 Parkmount Street Skegoneill	60.7	61.1	60.8	61.2
227	11 Mountcollyer Road Skegoneill	59.3	59.7	59.3	59.7
228	10 Seaview Street Skegoneill	64.0	64.4	64.0	64.4
229	9 Parkmount Street Skegoneill	63.9	64.3	64.0	64.3
230	30a Mountcollyer Avenue Town Parks	65.7	66.2	65.7	66.2
231	19 Parkmount Street Skegoneill	55.0	55.4	55.1	55.5
232	24 Mountcollyer Avenue Town Parks	63.6	64.1	63.6	64.1
234	55 Mountcollyer Avenue Town Parks	59.0	59.5	59.0	59.5
235	32 Mountcollyer Avenue Town Parks	66.6	67.1	66.6	67.1
236	35 Parkmount Street Skegoneill	63.9	64.4	63.9	64.4

Ref	Address	Predicted Sound Level, LA10,18h dB			
		2021DM	2035DM	2021DS	2035DS
237	72 Mountcollyer Avenue Town Parks	59.7	60.1	59.7	60.1
238	18 Seaview Street Skegoneill	57.6	58.0	57.7	58.1
239	31 Mountcollyer Avenue Skegoneill	61.2	61.7	61.2	61.7
240	11 Seaview Street Skegoneill	62.5	62.9	62.5	62.9
241	7 Seaview Street Skegoneill	67.4	67.8	67.5	67.8
242	19 Seaview Street Skegoneill	61.2	61.6	61.2	61.6
243	21 Mountcollyer Avenue Town Parks	59.5	59.9	59.5	59.9
244	14 Seaview Street Skegoneill	55.3	55.7	55.4	55.8
245	27 Parkmount Street Skegoneill	58.0	58.4	58.1	58.5
246	8 Mountcollyer Road Skegoneill	61.7	62.2	61.7	62.2
247	8 Seaview Street Skegoneill	64.4	64.8	64.4	64.8
248	6 Seaview Street Skegoneill	65.0	65.4	65.1	65.4
249	21 Parkmount Street Skegoneill	60.2	60.6	60.3	60.7
250	5 Parkmount Street Skegoneill	68.1	68.5	68.1	68.5
251	25 Parkmount Street Skegoneill	60.6	61.0	60.6	61.0
252	52 Limestone Road Town Parks	59.6	60.0	59.6	60.0
253	39 Mountcollyer Avenue Skegoneill	65.8	66.3	65.8	66.3
254	26 Seaview Street Skegoneill	61.8	62.3	61.9	62.3
255	35 Mountcollyer Avenue Skegoneill	63.1	63.6	63.1	63.6
256	51 Mountcollyer Avenue Skegoneill	65.6	66.1	65.6	66.1
257	38 Parkmount Street Skegoneill	66.7	67.2	66.7	67.2
258	22 Parkmount Street Skegoneill	62.1	62.5	62.1	62.5
259	37 Mountcollyer Avenue Skegoneill	59.1	59.6	59.2	59.6
261	4 Mountcollyer Road Skegoneill	65.3	65.8	65.3	65.8
262	4 Seaview Street Skegoneill	67.9	68.3	68.0	68.3
263	23 Parkmount Street Skegoneill	60.3	60.7	60.4	60.8
265	5 Trainfield Street Town Parks	59.5	59.9	59.5	59.9
266	39 New Lodge Road Town Parks	55.5	55.9	55.7	56.0
267	52 Sheridan Street Town Parks	52.7	53.1	52.9	53.2
268	28 Spamount Street Town Parks	55.5	55.9	55.6	55.9
269	40 New Lodge Road Town Parks	65.1	65.5	65.1	65.5
270	7 Trainfield Street Town Parks	52.7	53.1	52.8	53.2
271	24 Spamount Street Town Parks	57.4	57.8	57.5	57.8
272	30 Spamount Street Town Parks	56.7	57.0	56.7	57.1

Ref	Address	Predicted Sound Level, LA10,18h dB			
		2021DM	2035DM	2021DS	2035DS
273	6 Ludlow Square Town Parks	57.3	57.6	57.3	57.7
274	4 Sheridan Court Town Parks	51.9	52.3	52.1	52.4
275	43 New Lodge Road Town Parks	54.9	55.2	55.0	55.4
276	38 Spamount Street Town Parks	54.5	54.8	54.6	54.9
277	3 Sheridan Court Town Parks	54.1	54.4	54.2	54.4
279	44 New Lodge Road Town Parks	68.5	68.9	68.5	68.9
280	21 Spamount Street Town Parks	55.1	55.5	55.2	55.5
281	1 Ludlow Square Town Parks	55.2	55.6	55.3	55.7
282	32 Spamount Street Town Parks	56.6	57.0	56.6	56.9
283	24 Lepper Street Town Parks	56.5	56.9	56.5	56.8
284	117 New Lodge Road Town Parks	53.3	53.6	53.4	53.7
285	37 New Lodge Road Town Parks	67.3	67.7	67.3	67.7
286	119 New Lodge Road Town Parks	54.7	55.1	54.8	55.1
288	46 New Lodge Road Town Parks	52.7	53.1	52.9	53.2
289	26 Spamount Street Town Parks	57.6	58.0	57.6	57.9
290	19a Sheridan Street Town Parks	50.7	51.0	50.9	51.2
291	23 Spamount Street Town Parks	58.1	58.5	58.1	58.4
292	19 Spamount Street Town Parks	56.8	57.1	56.7	57.0
293	9 Trainfield Street Town Parks	51.4	51.8	51.5	51.8
294	8 Trainfield Street Town Parks	55.3	55.6	55.4	55.7
295	48 Sheridan Street Town Parks	54.8	55.1	54.8	55.1
296	1 Sheridan Court Town Parks	54.6	55.0	54.7	55.0
297	115 New Lodge Road Town Parks	55.5	55.8	55.6	55.9
298	11 Lepper Street Town Parks	52.6	52.9	52.7	53.0
299	2 Ludlow Square Town Parks	55.6	56.0	55.6	56.0
300	54 Sheridan Street Town Parks	53.7	54.0	53.8	54.1
301	11 Trainfield Street Town Parks	58.4	58.7	58.3	58.6
302	3 Ludlow Square Town Parks	54.5	54.9	54.6	55.0
303	4 Ludlow Square Town Parks	56.3	56.6	56.3	56.7
304	4 Trainfield Street Town Parks	55.5	55.9	55.5	55.9
305	3 Trainfield Street Town Parks	52.1	52.5	52.2	52.6
306	50 Sheridan Street Town Parks	53.7	54.1	53.8	54.1
307	22 Spamount Street Town Parks	57.1	57.5	57.2	57.5

Ref	Address	Predicted Sound Level, LA10,18h dB			
		2021DM	2035DM	2021DS	2035DS
308	6 Sheridan Court Town Parks	54.3	54.6	54.4	54.7
309	58 Sheridan Street Town Parks	55.1	55.5	55.2	55.5
310	13 Lepper Street Town Parks	53.4	53.7	53.4	53.8
311	5 Ludlow Square Town Parks	57.2	57.6	57.3	57.6
312	20 Spamount Street Town Parks	54.9	55.3	55.0	55.4
313	2 Trainfield Street Town Parks	57.8	58.1	57.9	58.2
314	41 New Lodge Road Town Parks	54.2	54.6	54.3	54.7
315	15 Lepper Street Town Parks	52.3	52.6	52.3	52.6
316	5 Sheridan Court Town Parks	53.6	54.0	53.7	54.1
317	6 Trainfield Street Town Parks	55.3	55.7	55.4	55.7
318	42 New Lodge Road Town Parks	54.5	54.8	54.6	54.9
320	40 Spamount Street Town Parks	54.8	55.2	54.9	55.2
321	34 Spamount Street Town Parks	57.2	57.6	57.2	57.5
322	7 Sheridan Court Town Parks	55.1	55.5	55.3	55.6
323	10 Trainfield Street Town Parks	57.1	57.5	57.1	57.4
324	19 Sheridan Street Town Parks	52.2	52.5	52.2	52.5
325	36 Spamount Street Town Parks	54.8	55.2	54.9	55.2
326	48 New Lodge Road Town Parks	53.8	54.2	53.9	54.2
328	2 Meadow Close Town Parks	56.1	56.4	56.1	56.5
329	2 Clanmorris Street Town Parks	60.8	61.2	60.8	61.2
330	18 Mervue Street Town Parks	60.0	60.4	60.0	60.5
331	13 Glenrosa Link Town Parks	57.1	57.5	57.1	57.4
332	8 Orchard Street Town Parks	66.2	66.7	66.7	67.1
333	21 Mervue Street Town Parks	56.4	56.7	56.4	56.8
334	11 Hillman Street Town Parks	57.9	58.4	58.3	58.6
335	16 Carnalea Place Town Parks	58.1	58.5	58.1	58.5
336	8 Midland Terrace Town Parks	62.4	62.8	62.7	63.0
337	2 Midland Close Town Parks	71.6	72.0	71.6	72.0
338	34 Glenrosa Link Town Parks	59.3	59.7	59.3	59.7
339	4 Midland Crescent Town Parks	58.7	59.1	58.7	59.1
340	21 Bentinck Street Town Parks	62.7	63.1	62.8	63.2
341	45 Clanmorris Street Town Parks	55.0	55.4	55.1	55.5
342	7 Greenmount Place Town Parks	56.9	57.3	56.9	57.2
343	14 Mervue Street Town Parks	61.6	62.1	61.6	62.1

Ref	Address	Predicted Sound Level, LA10,18h dB			
		2021DM	2035DM	2021DS	2035DS
344	18 Clanmorris Street Town Parks	57.1	57.5	57.2	57.5
345	15 Canning Street Town Parks	59.7	60.0	59.8	60.2
346	7 St. Pauls Fold Town Parks	57.5	57.9	57.6	58.0
347	1 Lilliput Court Town Parks	61.6	62.1	61.6	62.1
348	3 Lilliput Court Town Parks	59.1	59.5	59.2	59.6
349	12 St. Pauls Fold Town Parks	57.3	57.7	57.4	57.8
350	48 Clanmorris Street Town Parks	59.0	59.4	59.0	59.4
351	108 North Queen Street Town Parks	72.0	72.6	73.5	73.9
352	5 Mervue Street Town Parks	67.1	67.6	67.1	67.6
353	6 Hillman Court Town Parks	53.2	53.6	53.4	53.7
354	5 Canning Place Town Parks	61.8	62.2	61.8	62.1
355	16 Cosgrave Heights Town Parks	57.3	57.7	57.3	57.7
356	12 Cultra Street Town Parks	60.1	60.4	60.1	60.5
357	6 Mervue Street Town Parks	64.5	65.0	64.5	65.0
358	38 Glenrosa Link Town Parks	54.8	55.2	54.8	55.2
359	8b Mountcollyer Avenue Town Parks	63.7	64.1	63.7	64.1
360	39 Clanmorris Street Town Parks	57.6	57.9	57.6	58.0
361	6 Clanmorris Street Town Parks	59.4	59.8	59.4	59.8
362	33 Clanmorris Street Town Parks	56.2	56.6	56.1	56.5
363	2 Cultra Street Town Parks	60.5	60.9	60.5	60.9
364	4 Greenmount Place Town Parks	55.2	55.6	55.3	55.6
365	45 Bentinck Street Town Parks	57.8	58.2	57.9	58.2
366	15 Meadow Place Town Parks	55.5	55.9	55.5	55.9
367	48 Glenrosa Link Town Parks	63.9	64.4	63.9	64.4
368	28 Clanmorris Street Town Parks	56.0	56.4	56.0	56.4
369	5 Greenmount Place Town Parks	55.7	56.0	55.7	56.1
370	22 Cosgrave Heights Town Parks	59.9	60.3	60.0	60.4
371	6 St. Pauls Fold Town Parks	57.6	57.9	57.7	58.0
372	29 Clanmorris Street Town Parks	55.7	56.1	55.7	56.1
373	106 North Queen Street Town Parks	72.1	72.7	73.6	74.0
374	355 North Queen Street Town Parks	73.7	74.2	73.7	74.2
375	16 Glenrosa Link Town Parks	56.4	56.7	56.4	56.8
376	321 North Queen Street Town Parks	71.7	72.2	71.7	72.2

Ref	Address	Predicted Sound Level, LA10,18h dB			
		2021DM	2035DM	2021DS	2035DS
377	339 North Queen Street Town Parks	73.0	73.5	73.0	73.5
378	12 Clanmorris Street Town Parks	57.2	57.6	57.3	57.6
379	17 Hillman Street Town Parks	57.9	58.3	58.0	58.4
380	309 North Queen Street Town Parks	71.4	71.9	71.4	71.9
381	21 Cosgrave Heights Town Parks	60.0	60.4	60.1	60.5
382	21 Clanmorris Street Town Parks	55.8	56.2	55.8	56.2
383	5 St. Pauls Fold Town Parks	57.6	57.9	57.6	58.0
384	307 North Queen Street Town Parks	71.0	71.5	71.0	71.5
385	14 Clanmorris Street Town Parks	57.3	57.7	57.5	57.8
386	301 North Queen Street Town Parks	70.6	71.1	70.6	71.1
387	13 Carnalea Place Town Parks	57.4	57.7	57.4	57.8
388	13 Meadow Place Town Parks	54.6	55.0	54.7	55.1
389	17 Canning Street Town Parks	59.7	60.1	59.8	60.2
390	8 Meadow Close Town Parks	54.1	54.5	54.2	54.6
391	18 Glenrosa Link Town Parks	56.7	57.0	56.7	57.1
392	4 Midland Terrace Town Parks	64.1	64.4	64.3	64.6
393	41 Bentinck Street Town Parks	58.0	58.4	58.1	58.5
394	39 Bentinck Street Town Parks	57.6	58.0	57.8	58.1
395	13 Upper Canning Street Town Parks	56.4	56.8	56.5	56.9
396	8 St. Pauls Fold Town Parks	58.0	58.4	58.0	58.4
397	17 Cosgrave Heights Town Parks	57.6	57.9	57.6	58.0
398	323 North Queen Street Town Parks	72.0	72.4	72.0	72.5
399	28 Glenrosa Link Town Parks	61.4	61.8	61.4	61.9
400	15 Carnalea Place Town Parks	57.4	57.7	57.4	57.8
401	15 Hillman Street Town Parks	59.8	60.2	59.9	60.3
402	9 Canning Street Town Parks	59.7	60.1	59.9	60.3
403	4 Meadow Close Town Parks	58.1	58.5	58.1	58.5
404	31 Bentinck Street Town Parks	62.9	63.4	63.4	63.8
405	2 Glenrosa Link Town Parks	55.8	56.1	55.9	56.2
406	12 Midland Close Town Parks	58.0	58.4	58.1	58.5
407	3 Canning Place Town Parks	62.0	62.3	62.1	62.4
408	337 North Queen Street Town Parks	73.0	73.5	73.0	73.5
409	1 Greenmount Place Town Parks	55.7	56.0	55.8	56.2

Ref	Address	Predicted Sound Level, LA10,18h dB			
		2021DM	2035DM	2021DS	2035DS
410	10 Clanmorris Street Town Parks	59.3	59.7	59.2	59.6
411	333 North Queen Street Town Parks	72.7	73.2	72.8	73.2
412	2 Cambridge Street Town Parks	59.6	60.0	59.8	60.1
413	47 Bentinck Street Town Parks	57.7	58.1	57.8	58.2
414	331 North Queen Street Town Parks	72.7	73.2	72.7	73.2
415	2 Orchard Street Town Parks	60.4	60.9	60.6	61.0
416	9 Greenmount Place Town Parks	56.1	56.5	56.3	56.6
417	16 Mervue Street Town Parks	60.8	61.3	60.9	61.3
418	34 Mervue Street Town Parks	57.6	57.9	57.6	58.0
419	19 Canning Street Town Parks	59.7	60.1	59.8	60.2
420	22 Mervue Street Town Parks	59.3	59.7	59.3	59.7
421	6 Bentinck Street Town Parks	58.2	58.5	58.3	58.7
422	303 North Queen Street Town Parks	70.7	71.2	70.7	71.2
423	9 Meadow Close Town Parks	54.1	54.4	54.2	54.6
424	5 Hillman Street Town Parks	60.6	61.1	61.3	61.7
425	327 North Queen Street Town Parks	72.3	72.8	72.3	72.8
426	50 Glenrosa Link Town Parks	61.1	61.5	61.1	61.6
427	16 Greenmount Place Town Parks	55.8	56.2	55.9	56.3
428	15 Mervue Street Town Parks	57.1	57.5	57.1	57.5
429	24 Clanmorris Street Town Parks	57.2	57.6	57.2	57.6
430	5 Hillman Court Town Parks	53.3	53.7	53.5	53.9
431	37 Clanmorris Street Town Parks	55.4	55.8	55.4	55.8
432	3 Canning Street Town Parks	60.0	60.4	60.0	60.4
433	9 Hillman Street Town Parks	60.6	61.0	60.9	61.2
434	17 Midland Crescent Town Parks	60.0	60.4	60.2	60.5
435	38 Clanmorris Street Town Parks	59.3	59.7	59.3	59.7
436	18 Cultra Street Town Parks	62.3	62.7	62.3	62.7
437	1 Glenrosa Link Town Parks	56.3	56.7	56.4	56.8
438	25 Bentinck Street Town Parks	60.6	61.1	60.9	61.3
439	18 Midland Close Town Parks	65.7	66.1	65.8	66.2
440	9 Upper Canning Street Town Parks	58.2	58.6	58.2	58.6
441	41 Clanmorris Street Town Parks	58.5	58.9	58.5	58.9
442	22 Clanmorris Street Town Parks	56.1	56.5	56.2	56.6
443	15 Glenrosa Link Town Parks	54.3	54.7	54.3	54.7

Ref	Address	Predicted Sound Level, LA10,18h dB			
		2021DM	2035DM	2021DS	2035DS
444	18 Cosgrave Heights Town Parks	56.8	57.2	56.8	57.2
445	17 Bentinck Street Town Parks	64.3	64.7	64.4	64.8
446	7 Mervue Street Town Parks	61.0	61.4	61.0	61.4
447	24 St. Pauls Fold Town Parks	56.9	57.3	57.0	57.3
448	25 Cosgrave Heights Town Parks	61.3	61.8	61.3	61.7
449	24 Cosgrave Heights Town Parks	58.9	59.3	59.0	59.4
450	10 Carnalea Place Town Parks	61.2	61.5	61.1	61.5
451	20 Cosgrave Heights Town Parks	60.3	60.7	60.3	60.7
452	2 Midland Terrace Town Parks	64.9	65.3	65.2	65.5
453	7 Meadow Close Town Parks	54.4	54.8	54.5	54.9
454	9 Mervue Street Town Parks	59.3	59.8	59.4	59.8
455	53 Clanmorris Street Town Parks	57.5	57.9	57.6	58.0
456	32 Mervue Street Town Parks	57.7	58.1	57.8	58.2
457	24 Glenrosa Link Town Parks	58.0	58.4	58.0	58.4
458	7 Glenrosa Link Town Parks	54.6	55.0	54.7	55.0
459	4 Meadow Place Town Parks	54.2	54.6	54.5	54.8
460	1 Meadow Place Town Parks	57.7	58.1	57.8	58.4
461	10 Meadow Close Town Parks	54.1	54.5	54.2	54.6
462	52 Duncairn Gardens Town Parks	65.4	65.9	65.4	65.9
463	1 Hillman Court Town Parks	57.9	58.3	58.0	58.4
464	3 Glenrosa Link Town Parks	56.5	56.8	56.5	56.9
465	1 Canning Place Town Parks	62.1	62.4	62.3	62.6
466	357 North Queen Street Town Parks	70.1	70.6	70.1	70.6
467	3 Hillman Close Town Parks	60.1	60.6	60.8	61.1
468	293 North Queen Street Town Parks	70.1	70.6	70.2	70.7
469	25 Canning Street Town Parks	59.1	59.5	59.2	59.6
470	48 Duncairn Gardens Town Parks	54.3	54.7	54.4	54.8
471	14 Carnalea Place Town Parks	57.3	57.7	57.4	57.7
472	10 Mervue Street Town Parks	62.7	63.2	62.7	63.2
473	295 North Queen Street Town Parks	70.2	70.7	70.3	70.7
474	11 Hillman Court Town Parks	57.6	58.2	57.8	58.1
475	8 Midland Close Town Parks	61.7	62.1	61.8	62.2
476	3 Cambridge Street Town Parks	57.6	58.0	57.7	58.1

Ref	Address	Predicted Sound Level, LA10,18h dB			
		2021DM	2035DM	2021DS	2035DS
477	44 Glenrosa Link Town Parks	63.7	64.1	63.6	64.1
478	52 Clanmorris Street Town Parks	61.1	61.6	61.2	61.6
479	32 Duncairn Gardens Town Parks	71.9	72.4	71.9	72.4
480	8 Hillman Close Town Parks	58.3	58.8	58.5	58.9
481	8 Meadow Place Town Parks	54.8	55.2	55.1	55.4
482	19 Mervue Street Town Parks	57.1	57.5	57.0	57.4
483	329 North Queen Street Town Parks	72.5	72.9	72.5	73.0
484	8 Greenmount Place Town Parks	54.2	54.6	54.3	54.6
485	13 Spamount Street Town Parks	57.1	57.5	57.3	57.6
486	17 Glenrosa Link Town Parks	54.3	54.8	54.4	54.7
487	11 Upper Canning Street Town Parks	56.6	57.0	56.7	57.0
488	5 Meadow Close Town Parks	58.8	59.2	58.8	59.2
489	30 Mervue Street Town Parks	58.1	58.4	58.1	58.5
490	26 Clanmorris Street Town Parks	56.5	56.9	56.6	57.0
491	10 Orchard Street Town Parks	66.4	66.9	66.9	67.3
492	5 Bentinck Street Town Parks	64.2	64.7	64.7	65.1
493	9 Glenrosa Link Town Parks	56.8	57.2	56.9	57.3
494	11 Glenrosa Link Town Parks	57.6	58.0	57.6	58.0
495	4 Mervue Street Town Parks	65.1	65.6	65.1	65.6
496	3 Meadow Close Town Parks	56.4	56.8	56.5	56.8
497	351 North Queen Street Town Parks	73.9	74.4	73.9	74.4
498	4 Glenrosa Link Town Parks	55.8	56.2	55.9	56.3
499	8 Bentinck Street Town Parks	58.3	58.6	58.4	58.8
500	335 North Queen Street Town Parks	72.9	73.4	72.9	73.4
501	343 North Queen Street Town Parks	73.0	73.5	73.0	73.5
502	23 Glenrosa Link Town Parks	59.0	59.4	59.1	59.5
503	7 Bentinck Street Town Parks	65.2	65.7	65.7	66.2
504	23 Bentinck Street Town Parks	62.1	62.5	62.2	62.5
505	16 Cultra Street Town Parks	61.1	61.4	61.1	61.5
506	3 Greenmount Place Town Parks	56.7	57.1	56.8	57.1
507	18 Mountcollyer Avenue Town Parks	61.1	61.5	61.1	61.5
508	291 North Queen Street Town Parks	70.1	70.6	70.1	70.6
509	30 Clanmorris Street Town Parks	58.9	59.3	58.9	59.2
510	49 Clanmorris Street Town Parks	55.7	56.1	55.7	56.1

Ref	Address	Predicted Sound Level, LA10,18h dB			
		2021DM	2035DM	2021DS	2035DS
511	14 Midland Close Town Parks	64.5	64.9	64.5	64.8
512	11 Canning Street Town Parks	59.7	60.1	60.0	60.3
513	12 Glenrosa Link Town Parks	55.9	56.3	55.9	56.3
514	17 Mervue Street Town Parks	56.5	56.8	56.5	56.8
515	8 Hillman Court Town Parks	60.0	60.4	60.1	60.4
516	12a Mountcollyer Avenue Town Parks	62.3	62.6	62.3	62.6
517	4 Orchard Street Town Parks	58.7	59.1	58.8	59.2
518	4 Cambridge Street Town Parks	58.9	59.3	59.0	59.4
520	6 Midland Terrace Town Parks	62.8	63.2	62.9	63.3
521	315 North Queen Street Town Parks	71.9	72.4	71.9	72.4
522	46 Duncairn Gardens Town Parks	55.3	55.7	55.4	55.8
523	6 Orchard Street Clooney	58.0	58.4	58.1	58.5
524	7 Canning Place Town Parks	57.2	57.6	57.2	57.6
525	6 Glenrosa Link Town Parks	55.8	56.1	55.8	56.2
526	15 Midland Crescent Town Parks	59.6	60.0	59.8	60.1
527	50 Duncairn Gardens Town Parks	72.2	72.6	72.2	72.6
528	305 North Queen Street Town Parks	70.8	71.3	70.9	71.3
529	311 North Queen Street Town Parks	71.6	72.1	71.6	72.1
530	9 Canning Place Town Parks	57.2	57.6	57.3	57.6
531	6 Midland Close Town Parks	58.1	58.5	58.4	58.7
532	8 Midland Crescent Town Parks	58.9	59.3	59.2	59.5
533	7 Upper Canning Street Town Parks	56.1	56.5	56.2	56.6
534	7 Carnalea Place Town Parks	59.9	60.3	59.8	60.2
535	19 Glenrosa Link Town Parks	57.6	58.0	57.6	58.0
536	24 Mervue Street Town Parks	58.9	59.3	58.9	59.3
537	12 Hillman Court Town Parks	54.2	54.6	54.5	54.8
538	26 Mervue Street Town Parks	58.6	59.0	58.6	59.0
539	7 Midland Crescent Town Parks	62.2	62.6	62.3	62.6
540	11 Midland Crescent Town Parks	58.3	58.8	58.7	59.0
541	46 Glenrosa Link Town Parks	64.2	64.7	64.2	64.6
542	36 Glenrosa Link Town Parks	58.4	58.8	58.4	58.8
543	1 Meadow Close Town Parks	56.0	56.4	56.1	56.5
544	20 Mervue Street Town Parks	56.4	56.8	56.5	56.9

Ref	Address	Predicted Sound Level, LA10,18h dB			
		2021DM	2035DM	2021DS	2035DS
545	20 Clanmorris Street Town Parks	56.6	57.0	56.6	57.0
546	13 Hillman Street Town Parks	60.2	60.7	60.4	60.8
547	7 Meadow Place Town Parks	54.9	55.3	55.1	55.4
548	12 Carnalea Place Town Parks	60.4	60.7	60.4	60.7
549	347 North Queen Street Town Parks	71.0	71.5	71.0	71.5
550	15 Upper Canning Street Town Parks	56.7	57.0	56.8	57.1
551	4 Clanmorris Street Town Parks	60.0	60.5	60.0	60.5
552	13 Greenmount Place Town Parks	56.1	56.5	56.2	56.6
553	9 Bentinck Street Town Parks	66.9	67.4	67.3	67.8
554	42 Glenrosa Link Town Parks	63.6	64.1	63.6	64.0
555	16 Midland Close Town Parks	62.9	63.3	63.0	63.4
556	19 Cosgrave Heights Town Parks	58.6	59.0	58.6	59.0
557	6 Meadow Place Town Parks	57.4	57.8	57.5	57.9
558	9 Carnalea Place Town Parks	61.3	61.6	61.2	61.6
559	28 Mervue Street Town Parks	58.3	58.7	58.4	58.7
560	11 Carnalea Place Town Parks	59.3	59.7	59.4	59.7
561	21 Glenrosa Link Town Parks	54.9	55.3	55.0	55.3
562	31 Clanmorris Street Town Parks	59.0	59.4	59.0	59.3
563	15 Spamount Street Town Parks	56.9	57.3	57.1	57.4
564	35 Clanmorris Street Town Parks	56.2	56.6	56.2	56.5
565	2 Hillman Court Town Parks	55.2	55.6	55.4	55.7
566	313 North Queen Street Town Parks	71.8	72.2	71.8	72.3
567	46 Clanmorris Street Town Parks	58.9	59.4	58.9	59.4
568	44 Clanmorris Street Town Parks	58.5	58.9	58.5	58.9
569	1 Bentinck Street Town Parks	61.2	61.7	61.7	62.1
570	12 Orchard Street Town Parks	65.7	66.2	66.1	66.5
571	2 Bentinck Street Town Parks	60.9	61.3	60.9	61.3
572	1 Hillman Close Town Parks	58.5	58.9	58.9	59.2
573	317 North Queen Street Town Parks	72.1	72.6	72.1	72.6
574	23 Canning Street Town Parks	59.3	59.7	59.4	59.8
575	6 Meadow Close Town Parks	54.4	54.8	54.6	54.9
576	325 North Queen Street Town Parks	72.2	72.7	72.2	72.7
577	8 Carnalea Place Town Parks	60.8	61.1	60.7	61.0

Ref	Address	Predicted Sound Level, LA10,18h dB			
		2021DM	2035DM	2021DS	2035DS
578	13 Mervue Street Town Parks	57.7	58.1	57.8	58.1
579	34 Duncairn Gardens Town Parks	54.7	55.1	54.9	55.2
580	297 North Queen Street Town Parks	70.3	70.8	70.3	70.8
581	319 North Queen Street Town Parks	72.3	72.8	72.3	72.8
582	4 Bentinck Street Town Parks	58.1	58.5	58.3	58.6
583	50 Clanmorris Street Town Parks	59.2	59.7	59.2	59.7
584	3 Bentinck Street Town Parks	62.7	63.2	63.2	63.6
585	11 Bentinck Street Town Parks	67.7	68.2	68.1	68.5
586	2 Hillman Close Town Parks	58.6	59.0	59.0	59.3
587	10 Glenrosa Link Town Parks	56.0	56.3	56.0	56.4
588	14 Orchard Street Town Parks	69.0	69.5	69.4	69.8
589	4 St. Pauls Fold Town Parks	57.2	57.6	57.3	57.6
590	299 North Queen Street Town Parks	70.4	70.9	70.5	71.0
591	9 Hillman Court Town Parks	57.8	58.2	57.9	58.3
592	4 Hillman Court Town Parks	56.7	57.1	56.8	57.2
593	12 Bentinck Street Town Parks	58.2	58.6	58.3	58.7
594	9 Meadow Place Town Parks	56.9	57.3	56.9	57.2
595	3 Hillman Street Town Parks	65.1	65.7	66.1	66.5
596	21 Canning Street Town Parks	59.7	60.1	59.8	60.1
597	8 Glenrosa Link Town Parks	55.6	56.0	55.7	56.1
598	34 Clanmorris Street Town Parks	58.3	58.6	58.3	58.7
599	345 North Queen Street Town Parks	73.0	73.5	73.0	73.5
600	3 Midland Crescent Town Parks	62.8	63.1	62.8	63.2
601	11 Canning Place Town Parks	60.7	61.1	60.8	61.2
602	12 Greenmount Place Town Parks	55.6	56.0	55.7	56.0
603	361 North Queen Street Town Parks	73.9	74.4	73.9	74.4
604	30 Glenrosa Link Town Parks	64.3	64.8	64.3	64.8
605	27 Clanmorris Street Town Parks	55.6	56.0	55.6	56.0
606	341 North Queen Street Town Parks	73.0	73.5	73.0	73.5
607	27 Canning Street Town Parks	58.4	58.8	58.5	58.8
608	40 Glenrosa Link Town Parks	63.0	63.4	63.0	63.4
609	43 Bentinck Street Town Parks	57.9	58.2	58.0	58.4
610	2 Midland Crescent Town Parks	60.9	61.2	60.9	61.2
611	13 Canning Street Town Parks	59.4	59.8	59.4	59.8

Ref	Address	Predicted Sound Level, LA10,18h dB			
		2021DM	2035DM	2021DS	2035DS
612	27 Bentinck Street Town Parks	59.4	59.9	59.9	60.3
613	7 Hillman Street Town Parks	60.2	60.7	60.7	61.0
614	32 Glenrosa Link Town Parks	62.2	62.7	62.2	62.7
615	North & West Hss 8 Hanna Street Town Parks	62.0	62.3	62.0	62.4
616	8 Mervue Street Town Parks	63.5	63.9	63.5	64.0
617	10 Cultra Street Town Parks	59.8	60.2	59.9	60.2
618	12 Mervue Street Town Parks	62.4	62.8	62.4	62.9
619	5 Meadow Place Town Parks	54.4	54.8	54.5	54.9
620	26 Glenrosa Link Town Parks	56.9	57.2	56.9	57.3
621	1 Canning Street Clooney	59.8	60.2	59.8	60.2
622	6 Cultra Street Town Parks	60.6	61.0	60.6	61.0
623	2 Mervue Street Town Parks	65.7	66.2	65.7	66.2
624	42 Clanmorris Street Town Parks	57.8	58.3	57.8	58.3
625	36 Clanmorris Street Town Parks	56.8	57.2	56.8	57.2
626	10 Bentinck Street Town Parks	58.5	58.9	58.7	59.0
627	16 Clanmorris Street Town Parks	57.4	57.8	57.6	58.0
628	6 Carnalea Place Town Parks	59.0	59.4	59.0	59.3
629	13 Midland Crescent Town Parks	58.8	59.2	59.1	59.5
630	8 Clanmorris Street Town Parks	57.7	58.1	57.8	58.2
631	365 North Queen Street Town Parks	73.7	74.2	73.7	74.2
632	5 Canning Street Town Parks	59.8	60.2	59.8	60.2
633	14 Cosgrave Heights Town Parks	56.3	56.6	56.3	56.7
634	29 Bentinck Street Town Parks	61.6	62.1	62.1	62.5
635	7 Hillman Court Town Parks	58.6	59.0	58.7	59.1
636	23 Cosgrave Heights Town Parks	58.9	59.3	59.0	59.4
637	23 Clanmorris Street Town Parks	55.4	55.8	55.5	55.8
638	7 Canning Street Town Parks	59.4	59.8	59.5	59.9
639	11 Meadow Place Town Parks	55.9	56.3	55.9	56.2
640	25 Clanmorris Street Town Parks	55.3	55.7	55.3	55.6
641	40 Clanmorris Street Town Parks	57.2	57.6	57.2	57.6
642	3 Hillman Court Town Parks	57.1	57.5	57.2	57.6
643	The Harmons 19 Hillman Street Clooney	57.8	58.2	58.0	58.4
644	5 Glenrosa Link Town Parks	55.9	56.3	56.0	56.3

Ref	Address	Predicted Sound Level, LA10,18h dB			
		2021DM	2035DM	2021DS	2035DS
645	29 Canning Street Town Parks	58.8	59.2	58.8	59.2
646	1 Cambridge Street Town Parks	58.1	58.4	58.2	58.6
647	3 Meadow Place Town Parks	53.9	54.3	54.0	54.3
648	15 Cosgrave Heights Town Parks	55.6	55.9	55.7	56.0
649	14 Cultra Street Town Parks	60.8	61.2	60.8	61.2
650	33 Bentinck Street Town Parks	65.8	66.3	66.1	66.6
651	16 Orchard Street Town Parks	68.9	69.4	69.3	69.8
652	32 Clanmorris Street Town Parks	59.1	59.4	59.0	59.4
653	11 Mervue Street Town Parks	58.7	59.1	58.7	59.1
654	19 Bentinck Street Town Parks	63.1	63.5	63.1	63.5
655	1 Cosgrave Street Town Parks	73.9	74.4	73.9	74.4
656	2 Lilliput Street Town Parks	68.4	68.9	68.4	68.9
657	4 Lilliput Street Town Parks	67.0	67.5	67.0	67.5
658	6 Lilliput Street Town Parks	65.7	66.2	65.7	66.2
659	30 Victoria Parade Town Parks	60.5	60.9	60.6	60.9
660	6 Carlisle Square Town Parks	55.4	55.7	55.5	55.8
661	21 Carlisle Road Town Parks	56.2	56.5	56.6	56.8
662	7 Carlisle Parade Town Parks	56.6	56.9	56.8	57.1
663	16 Ludlow Square Town Parks	53.8	54.2	53.9	54.3
664	31 Sheridan Street Town Parks	53.6	54.0	53.8	54.1
665	27 Carlisle Parade Town Parks	57.0	57.4	57.2	57.5
666	65 Antrim Road Town Parks	51.6	52.0	51.7	52.1
667	46 Carlisle Road Town Parks	57.0	57.3	57.1	57.3
668	11 Bruslee Way Town Parks	52.6	53.0	52.8	53.1
669	10 Victoria Parade Town Parks	63.9	64.4	64.2	64.6
670	19 Carlisle Parade Town Parks	57.2	57.5	57.4	57.7
671	30 Carlisle Road Town Parks	58.9	59.2	59.0	59.3
672	20 Carlisle Road Town Parks	56.6	56.9	56.8	57.0
673	15 Bruslee Way Town Parks	65.1	65.5	65.1	65.4
674	4 Bruslee Way Town Parks	53.8	54.2	54.1	54.4
675	28 Carlisle Road Town Parks	59.5	59.8	59.6	59.9
676	57 Antrim Road Town Parks	52.0	52.4	52.1	52.5
677	33 Carlisle Square Town Parks	56.9	57.2	57.0	57.3
678	6 Bruslee Way Town Parks	54.4	54.8	54.6	55.0

Ref	Address	Predicted Sound Level, LA10,18h dB			
		2021DM	2035DM	2021DS	2035DS
679	68 Sheridan Street Town Parks	53.5	53.8	53.5	53.9
680	6 St James Mews Town Parks	53.2	53.6	53.4	53.7
681	58 Lepper Street Town Parks	54.7	55.0	54.8	55.1
682	18 Victoria Parade Town Parks	63.8	64.3	64.0	64.4
684	26 Carlisle Square Town Parks	66.0	66.2	66.3	66.5
685	6 Victoria Parade Town Parks	59.3	59.7	59.5	59.8
686	28 Victoria Parade Town Parks	60.1	60.4	60.2	60.5
688	20 Dawson Street Town Parks	54.1	54.5	54.3	54.6
689	25 Carlisle Parade Town Parks	56.9	57.2	57.0	57.3
690	22 Carlisle Square Town Parks	58.1	58.3	58.1	58.4
691	62 Victoria Parade Town Parks	59.2	59.5	59.4	59.7
692	27 Sheridan Street Town Parks	53.8	54.2	53.9	54.2
693	24 Pim Street Town Parks	54.0	54.4	54.4	54.8
694	73 Antrim Road Town Parks	55.5	55.8	55.6	55.9
695	16 Carlisle Square Town Parks	52.9	53.3	53.1	53.4
696	32 Dawson Street Town Parks	53.3	53.7	53.5	53.8
697	90 Antrim Road Town Parks	52.3	52.7	52.4	52.8
698	23 Carlisle Parade Town Parks	53.7	54.0	54.0	54.3
699	26 Carlisle Road Town Parks	61.2	61.5	60.6	60.8
700	50 Lepper Street Town Parks	52.7	53.1	52.8	53.1
701	33 Carlisle Road Town Parks	56.7	57.0	56.9	57.2
702	64 Victoria Parade Town Parks	59.9	60.2	60.2	60.5
703	22 Victoria Parade Town Parks	60.0	60.4	60.1	60.4
704	45 Carlisle Road Town Parks	59.4	59.7	59.7	59.9
705	5 St. James Street Town Parks	53.7	54.1	53.8	54.1
706	15 Carlisle Road Town Parks	55.7	56.0	55.9	56.2
707	5 St James Mews Town Parks	53.4	53.8	53.6	53.8
708	21 Sheridan Street Town Parks	52.4	52.7	52.6	52.9
709	23 Dawson Street Town Parks	52.5	52.9	52.7	53.0
710	21 Carlisle Terrace Town Parks	57.7	58.1	57.9	58.2
711	22 Dawson Street Town Parks	53.7	54.1	53.8	54.1
712	27 Lepper Street Town Parks	56.4	56.7	56.5	56.8
713	26 Victoria Parade Town Parks	59.8	60.2	59.8	60.1

Ref	Address	Predicted Sound Level, LA10,18h dB			
		2021DM	2035DM	2021DS	2035DS
714	7 Carlisle Terrace Town Parks	56.5	56.8	56.6	56.9
715	25 Dawson Street Town Parks	55.0	55.3	55.1	55.4
716	16 Bruslee Way Town Parks	56.6	57.0	56.9	57.2
717	16 St James Mews Town Parks	52.4	52.7	52.5	52.8
718	5 Vicinage Park Town Parks	52.5	52.8	52.6	52.9
719	10 Victoria Barracks Town Parks	52.5	52.9	52.7	53.0
720	5 Carlisle Terrace Town Parks	55.5	55.8	55.6	55.9
721	40 Bruslee Way Town Parks	62.6	63.0	62.6	63.0
722	29 New Lodge Road Town Parks	68.0	68.4	68.0	68.4
723	9 Sheridan Street Town Parks	54.3	54.7	54.4	54.7
725	68 Antrim Road Town Parks	51.3	51.7	51.4	51.7
726	20 Pim Street Town Parks	55.7	56.0	56.1	56.4
727	14 Churchill Street Town Parks	53.4	53.7	53.6	53.9
728	2 Victoria Parade Town Parks	59.3	59.6	59.4	59.8
729	3 Carlisle Parade Town Parks	56.2	56.5	56.4	56.7
730	72 Antrim Road Town Parks	55.5	55.8	55.6	55.9
731	30 Bruslee Way Town Parks	56.7	57.1	56.8	57.1
732	5 Carlisle Parade Town Parks	56.3	56.6	56.4	56.7
733	24 Carlisle Square Town Parks	58.1	58.4	58.2	58.5
734	29 Lepper Street Town Parks	52.3	52.7	52.5	52.8
735	29 Carlisle Road Town Parks	56.2	56.5	56.4	56.7
736	18d Duncairn Parade Town Parks	54.4	54.8	54.6	54.9
737	15 St. James Street Town Parks	54.2	54.6	54.2	54.5
738	3 Cranburn Street Town Parks	53.3	53.6	53.3	53.7
739	35 Carlisle Road Town Parks	54.8	55.3	55.1	55.5
740	83 Antrim Road Town Parks	54.2	54.5	54.3	54.6
741	32 Victoria Parade Town Parks	63.6	64.0	63.6	64.1
742	20 Bruslee Way Town Parks	57.3	57.6	57.4	57.7
743	2 New Lodge Place Town Parks	70.3	70.7	70.3	70.7
744	40 Carlisle Road Town Parks	57.4	57.7	57.5	57.8
745	42 Victoria Parade Town Parks	62.7	63.1	62.8	63.2
746	2 Dawson Street Town Parks	51.3	51.7	51.5	51.8
747	14 Maralin Place Town Parks	52.8	53.1	52.9	53.2

Ref	Address	Predicted Sound Level, LA10,18h dB			
		2021DM	2035DM	2021DS	2035DS
748	16 Carlisle Road Town Parks	56.4	56.7	56.6	56.9
749	23 Carlisle Terrace Town Parks	55.6	55.9	55.8	56.1
751	38 Pinkerton Walk Town Parks	68.3	68.7	68.3	68.7
752	10 Carlisle Walk Town Parks	55.9	56.2	56.0	56.3
757	36 Carlisle Road Town Parks	58.0	58.4	58.2	58.5
759	66 Antrim Road Town Parks	51.2	51.6	51.3	51.7
760	19 Lepper Street Town Parks	51.8	52.1	51.9	52.2
761	78 Lepper Street Town Parks	55.0	55.3	55.3	55.5
762	30 Pim Street Town Parks	56.3	56.6	56.7	57.1
763	4 Victoria Barracks Town Parks	57.1	57.4	57.3	57.5
764	46 Victoria Parade Town Parks	62.6	63.1	62.7	63.1
765	30 Carlisle Square Town Parks	56.4	56.7	56.4	56.7
766	31 Dawson Street Town Parks	55.3	55.6	55.4	55.7
767	35 Carlisle Terrace Town Parks	54.7	55.0	54.9	55.2
768	24 Bruslee Way Town Parks	55.2	55.5	55.3	55.6
770	23 Carlisle Square Town Parks	58.1	58.4	58.2	58.5
771	18 Carlisle Square Town Parks	54.4	54.7	54.6	54.9
772	16 Churchill Street Town Parks	53.6	53.9	53.9	54.2
773	12 Carlisle Walk Town Parks	55.9	56.3	56.2	56.5
774	38 Bruslee Way Town Parks	61.9	62.3	61.9	62.3
775	15 St James Mews Town Parks	52.4	52.7	52.5	52.8
776	3 St. James Street Town Parks	51.6	52.0	51.8	52.1
777	82 Antrim Road Town Parks	50.7	51.0	50.8	51.1
778	5 Carlisle Road Town Parks	55.9	56.2	56.1	56.4
779	67 Antrim Road Town Parks	51.7	52.1	51.8	52.2
780	32 Carlisle Road Town Parks	58.3	58.6	58.5	58.8
781	P J Brown Funeral Director 50 Victoria Parade Town	62.3	62.7	62.3	62.8
782	9 Carlisle Parade Town Parks	53.9	54.2	54.2	54.4
783	38 Victoria Parade Town Parks	62.6	63.1	62.7	63.2
784	2 Carlisle Walk Town Parks	56.5	56.8	56.9	57.1
785	25 Lepper Street Town Parks	56.8	57.1	56.9	57.2
786	32 Bruslee Way Town Parks	54.7	55.1	54.9	55.3
787	2 St James Mews Town Parks	53.2	53.5	53.3	53.7
789	Block C - Bedeque House Annesley Street Town	56.1	56.4	56.5	56.8

Ref	Address	Predicted Sound Level, LA10,18h dB			
		2021DM	2035DM	2021DS	2035DS
790	24 Carlisle Road Town Parks	62.4	62.8	60.6	60.9
791	9 Carlisle Road Town Parks	55.8	56.2	56.1	56.3
792	4 Carlisle Square Town Parks	55.2	55.5	55.2	55.6
793	7 St James Mews Town Parks	53.4	53.8	53.6	53.9
794	36 Bruslee Way Town Parks	55.7	56.0	55.9	56.2
795	16 Vicinage Park Town Parks	51.4	51.8	51.5	51.9
796	64 Antrim Road Town Parks	55.5	55.8	55.6	55.9
797	12 Victoria Parade Town Parks	63.7	64.2	64.0	64.4
798	17 Carlisle Road Town Parks	56.2	56.5	56.5	56.8
799	52 Lepper Street Town Parks	54.3	54.6	54.5	54.8
800	31 Carlisle Square Town Parks	56.2	56.5	56.3	56.6
801	8 Bruslee Way Town Parks	56.5	56.9	56.7	57.0
802	10 Vicinage Park Town Parks	53.2	53.6	53.3	53.7
803	26 Dawson Street Town Parks	55.1	55.4	55.2	55.5
804	5 Carlisle Square Town Parks	61.8	62.1	61.9	62.2
805	11 Ludlow Square Town Parks	59.3	59.7	59.4	59.7
806	56 Victoria Parade Town Parks	60.1	60.4	60.2	60.6
807	44 Carlisle Road Town Parks	57.5	57.8	57.6	57.8
808	12b Victoria Parade Town Parks	59.5	59.8	59.9	60.3
809	11 Carlisle Terrace Town Parks	53.8	54.2	53.9	54.2
810	7 Carlisle Square Town Parks	59.7	60.0	59.8	60.0
811	35 Carlisle Square Town Parks	56.9	57.2	57.1	57.4
812	16 Pim Street Town Parks	55.2	55.5	55.5	55.8
813	11 Carlisle Square Town Parks	58.9	59.2	59.1	59.3
814	14 Carlisle Road Town Parks	57.2	57.5	57.5	57.7
816	14 Carlisle Walk Town Parks	56.6	57.0	56.8	57.1
817	44 Victoria Parade Town Parks	62.7	63.1	62.8	63.2
818	17 St James Mews Town Parks	52.3	52.7	52.4	52.8
819	12 Carlisle Square Town Parks	58.8	59.1	59.0	59.2
820	12 St James Mews Town Parks	53.5	53.9	53.6	53.9
821	25 Carlisle Terrace Town Parks	55.6	55.9	55.8	56.1
822	34 Carlisle Square Town Parks	56.9	57.2	57.1	57.3
823	69 Antrim Road Town Parks	51.6	52.0	51.7	52.1

Ref	Address	Predicted Sound Level, LA10,18h dB			
		2021DM	2035DM	2021DS	2035DS
824	10a Victoria Parade Town Parks	59.1	59.5	59.5	59.8
825	60 Carlisle Road Town Parks	60.6	60.8	60.6	60.9
826	2a Vicinage Park Town Parks	53.1	53.4	53.1	53.5
827	18 Carlisle Road Town Parks	56.5	56.8	56.8	57.0
828	82 Lepper Street Town Parks	55.5	55.9	55.7	56.0
829	71 Antrim Road Town Parks	51.7	52.0	51.8	52.2
831	33 Sheridan Street Town Parks	51.5	51.9	51.7	52.0
832	11 Victoria Barracks Town Parks	53.9	54.2	54.1	54.4
833	12 Pim Street Town Parks	55.0	55.3	55.3	55.7
834	38 Carlisle Road Town Parks	59.0	59.2	59.2	59.4
835	31 Carlisle Terrace Town Parks	55.8	56.1	56.0	56.3
836	9 Bruslee Way Town Parks	52.3	52.7	52.6	52.9
837	19 Carlisle Road Town Parks	58.8	59.2	59.0	59.3
838	47 Carlisle Road Town Parks	59.3	59.6	59.5	59.8
839	5 Victoria Barracks Town Parks	57.0	57.4	57.3	57.5
841	68 Lepper Street Town Parks	52.6	53.0	52.7	53.1
843	15 Carlisle Terrace Town Parks	56.5	56.8	56.6	56.9
844	70 Antrim Road Town Parks	51.1	51.5	51.2	51.6
845	28 Pinkerton Walk Town Parks	53.1	53.5	53.4	53.7
846	23 St. James Street Town Parks	54.0	54.3	54.1	54.4
847	6 Vicinage Park Town Parks	51.7	52.0	51.8	52.2
848	3 Vicinage Park Town Parks	52.3	52.6	52.4	52.8
849	34 Dawson Street Town Parks	55.6	56.0	55.7	55.9
850	25 Carlisle Square Town Parks	66.6	66.8	67.1	67.3
851	14 Pim Street Town Parks	55.2	55.5	55.5	55.9
852	1 Churchill Street Town Parks	56.6	56.9	56.7	57.0
853	5 Cranburn Street Town Parks	53.0	53.3	53.1	53.4
855	30 Duncairn Parade Town Parks	53.7	54.1	53.9	54.2
856	27 Dawson Street Town Parks	55.1	55.4	55.2	55.5
857	34 Victoria Parade Town Parks	62.9	63.3	62.9	63.4
858	12 Bruslee Way Town Parks	54.4	54.7	54.7	55.0
859	1 Sheridan Street Town Parks	50.7	51.0	50.8	51.1
860	6 Carlisle Walk Town Parks	55.7	56.1	56.0	56.3
861	8 New Lodge Place Town Parks	61.0	61.4	61.1	61.4

Ref	Address	Predicted Sound Level, LA10,18h dB			
		2021DM	2035DM	2021DS	2035DS
862	26 Bruslee Way Town Parks	55.4	55.8	55.6	55.9
863	12 Victoria Barracks Town Parks	53.1	53.4	53.3	53.6
864	19 Carlisle Square Town Parks	54.3	54.6	54.5	54.8
865	35 Sheridan Street Town Parks	53.3	53.6	53.5	53.8
866	74 Lepper Street Town Parks	56.2	56.6	56.4	56.7
867	12a Victoria Parade Town Parks	59.8	60.1	60.3	60.6
868	26 Pim Street Town Parks	55.9	56.3	56.3	56.7
869	25 New Lodge Road Town Parks	57.2	57.6	57.4	57.7
870	2 Maralin Place Town Parks	54.5	54.9	54.7	55.0
871	8 Maralin Place Town Parks	51.0	51.3	51.1	51.4
872	10 Carlisle Square Town Parks	58.8	59.1	58.9	59.2
873	4 Carlisle Road Town Parks	59.4	59.8	59.6	59.9
875	80 Antrim Road Town Parks	50.8	51.1	50.9	51.2
876	13 St. James Street Town Parks	50.1	50.5	50.3	50.6
878	17 St. James Street Town Parks	54.3	54.7	54.3	54.6
879	66 Lepper Street Town Parks	55.4	55.8	55.6	55.9
880	12 New Lodge Place Town Parks	55.1	55.5	55.3	55.6
881	6 Maralin Place Town Parks	54.3	54.7	54.4	54.7
882	29 Carlisle Square Town Parks	56.4	56.7	56.6	56.9
883	41 Carlisle Road Town Parks	55.0	55.3	55.2	55.5
885	6 Dawson Street Town Parks	52.4	52.8	52.5	52.9
886	8 Victoria Parade Town Parks	59.2	59.6	59.4	59.7
887	10 St James Mews Town Parks	53.4	53.7	53.5	53.8
888	6 Victoria Barracks Town Parks	57.0	57.4	57.2	57.5
889	4 Sheridan Street Town Parks	54.6	55.0	54.7	55.0
890	79 Antrim Road Town Parks	54.3	54.7	54.4	54.7
891	21 St. James Street Town Parks	54.1	54.5	54.2	54.5
892	16 Victoria Parade Town Parks	63.7	64.1	63.9	64.3
893	13 Carlisle Terrace Town Parks	56.5	56.8	56.6	56.9
894	26 Pinkerton Walk Town Parks	53.1	53.5	53.4	53.7
895	12 Carlisle Road Town Parks	58.6	58.9	58.7	59.0
896	40 Victoria Parade Town Parks	62.6	63.1	62.7	63.2
897	61 Antrim Road Town Parks	51.8	52.2	51.9	52.3

Ref	Address	Predicted Sound Level, LA10,18h dB			
		2021DM	2035DM	2021DS	2035DS
898	24 Dawson Street Town Parks	55.5	55.8	55.6	55.9
899	1a Vicinage Park Town Parks	52.7	53.0	52.7	53.1
901	23 Lepper Street Town Parks	51.3	51.7	51.5	51.8
902	1 St James Mews Town Parks	50.6	51.1	50.7	51.2
903	19 New Lodge Road Town Parks	67.5	67.9	67.5	67.9
904	29 Dawson Street Town Parks	52.4	52.8	52.6	52.9
905	7 Pim Street Town Parks	56.0	56.3	56.1	56.4
906	8 Carlisle Walk Town Parks	55.9	56.2	56.1	56.4
907	60 Lepper Street Town Parks	55.7	56.0	55.9	56.2
908	19 Carlisle Terrace Town Parks	56.3	56.7	56.6	56.8
910	2 Bruslee Way Town Parks	53.3	53.7	53.6	53.9
911	6 Carlisle Road Town Parks	58.8	59.2	59.0	59.3
912	34 Pim Street Town Parks	57.2	57.5	57.6	57.9
913	8 Carlisle Road Town Parks	56.7	57.0	56.9	57.2
914	13 St James Mews Town Parks	53.6	54.0	53.7	54.0
915	29 Sheridan Street Town Parks	53.8	54.1	53.9	54.2
916	20 Victoria Parade Town Parks	64.7	65.2	64.9	65.3
917	76 Antrim Road Town Parks	50.9	51.3	51.1	51.4
918	1 Dawson Street Town Parks	51.5	51.9	51.6	52.0
919	17 Carlisle Parade Town Parks	53.7	54.0	53.9	54.2
920	48 Carlisle Road Town Parks	70.1	70.3	67.5	67.7
921	29 Carlisle Terrace Town Parks	55.6	55.9	55.8	56.1
922	81 Antrim Road Town Parks	54.4	54.7	54.5	54.8
923	12 Maralin Place Town Parks	52.3	52.7	52.5	52.8
924	72 Lepper Street Town Parks	52.2	52.5	52.4	52.7
925	10b Victoria Parade Town Parks	58.9	59.2	59.1	59.4
926	70 Lepper Street Town Parks	52.9	53.3	53.1	53.5
927	29 Carlisle Parade Town Parks	53.8	54.1	54.0	54.3
928	7 Victoria Barracks Town Parks	57.1	57.4	57.2	57.5
930	37 Carlisle Parade Town Parks	53.7	54.0	53.8	54.1
931	8 Dawson Street Town Parks	55.2	55.5	55.3	55.6
932	18 Bruslee Way Town Parks	57.0	57.4	57.2	57.5
933	40 Carlisle Square Town Parks	54.8	55.1	55.0	55.3

Ref	Address	Predicted Sound Level, LA10,18h dB			
		2021DM	2035DM	2021DS	2035DS
934	11 Carlisle Road Town Parks	55.6	55.9	55.9	56.2
935	48 Victoria Parade Town Parks	62.5	63.0	62.6	63.1
936	21 Lepper Street Town Parks	51.7	52.1	51.8	52.1
938	60 Victoria Parade Town Parks	59.3	59.6	59.5	59.8
939	4 Dawson Street Town Parks	54.8	55.1	54.9	55.2
940	39 Carlisle Terrace Town Parks	56.3	56.6	56.5	56.8
941	22 Duncairn Parade Town Parks	54.2	54.5	54.4	54.7
942	58 Victoria Parade Town Parks	59.4	59.8	59.6	59.9
943	9 St. James Street Town Parks	51.6	52.0	51.8	52.1
944	25 Carlisle Road Town Parks	55.0	55.3	55.4	55.6
945	22 Bruslee Way Town Parks	54.7	55.0	54.9	55.2
946	15 Cranburn Street Town Parks	53.6	54.0	53.6	54.0
947	46 Lepper Street Town Parks	56.6	57.0	56.7	57.0
948	3 St James Mews Town Parks	53.6	54.0	53.7	54.1
950	10 Pim Street Town Parks	55.4	55.7	55.6	55.9
951	31 Lepper Street Town Parks	52.5	52.9	52.6	52.9
952	59 Antrim Road Town Parks	51.9	52.3	52.0	52.3
953	23 Sheridan Street Town Parks	51.4	51.8	51.6	51.9
954	20 Carlisle Walk Town Parks	54.0	54.4	54.2	54.5
955	30 Pinkerton Walk Town Parks	53.9	54.3	54.1	54.4
956	30 Dawson Street Town Parks	54.2	54.6	54.2	54.5
957	1 Carlisle Road Town Parks	61.7	62.1	61.8	62.2
958	4 Victoria Parade Town Parks	59.3	59.6	59.4	59.7
959	42 Bruslee Way Town Parks	69.1	69.5	69.1	69.5
960	35 Lepper Street Town Parks	55.8	56.2	56.0	56.3
961	1 Carlisle Square Town Parks	61.1	61.3	61.2	61.5
962	3 Victoria Barracks Town Parks	57.1	57.4	57.3	57.6
963	18 Pim Street Town Parks	55.3	55.7	55.7	56.0
964	43 Carlisle Road Town Parks	55.1	55.4	55.4	55.7
965	38 Carlisle Square Town Parks	59.0	59.2	59.4	59.6
966	1 Hopewell Avenue Town Parks	60.4	60.9	60.4	60.9
967	36 Dawson Street Town Parks	55.3	55.6	55.4	55.7
968	28 Pim Street Town Parks	56.1	56.4	56.5	56.8
969	78 Victoria Parade Town Parks	58.4	58.7	58.8	59.1

Ref	Address	Predicted Sound Level, LA10,18h dB			
		2021DM	2035DM	2021DS	2035DS
970	63 Antrim Road Town Parks	51.6	52.0	51.8	52.1
971	14 Carlisle Square Town Parks	54.6	54.9	54.8	55.1
972	31 New Lodge Road Town Parks	68.0	68.4	68.0	68.4
973	27 Carlisle Square Town Parks	64.8	65.0	65.2	65.4
974	37 Lepper Street Town Parks	55.7	56.0	55.9	56.2
975	11 St James Mews Town Parks	50.7	51.3	50.8	51.2
976	77 Antrim Road Town Parks	53.6	54.0	53.8	54.1
977	32 Carlisle Square Town Parks	55.8	56.1	56.0	56.2
978	15 Carlisle Square Town Parks	53.2	53.6	53.4	53.7
979	1 Bruslee Way Town Parks	57.5	57.9	57.6	58.0
980	52 Victoria Parade Town Parks	62.0	62.5	62.1	62.5
981	7 Bruslee Way Town Parks	56.9	57.3	57.0	57.4
983	10 Churchill Street Town Parks	51.9	52.2	52.0	52.4
984	35 Carlisle Parade Town Parks	53.6	53.9	53.8	54.1
985	56 Lepper Street Town Parks	54.6	54.9	54.7	55.0
986	3 Carlisle Square Town Parks	57.1	57.4	57.2	57.5
987	4 St James Mews Town Parks	53.7	54.0	53.8	54.1
988	Block B - Bedeque House Annesley Street Town	54.9	55.3	54.9	55.3
989	4 Vicinage Park Town Parks	54.2	54.5	54.3	54.6
990	6 Pim Street Town Parks	55.6	56.0	55.7	56.1
991	1 St. James Street Town Parks	53.2	53.6	53.4	53.7
992	1b Vicinage Park Town Parks	50.8	51.1	50.9	51.3
993	62 Lepper Street Town Parks	55.5	55.8	55.6	55.9
994	28 Carlisle Square Town Parks	63.0	63.2	63.2	63.4
995	5 Pim Street Town Parks	53.9	54.2	54.1	54.4
996	34 Pinkerton Walk Town Parks	57.6	58.0	57.8	58.1
997	17 Cranburn Street Town Parks	52.8	53.2	52.9	53.3
998	23 Carlisle Road Town Parks	54.2	54.6	54.5	54.8
999	27 Carlisle Terrace Town Parks	54.6	54.9	54.8	55.1
1001	10 Dawson Street Town Parks	54.9	55.3	55.0	55.3
1002	36 Pinkerton Walk Town Parks	60.9	61.3	61.0	61.3
1003	76 Lepper Street Town Parks	54.7	55.1	55.0	55.3
1004	15 Carlisle Parade Town Parks	57.3	57.6	57.5	57.8

Ref	Address	Predicted Sound Level, LA10,18h dB			
		2021DM	2035DM	2021DS	2035DS
1005	39 Carlisle Road Town Parks	54.8	55.1	55.1	55.4
1006	66 Sheridan Street Town Parks	54.9	55.3	55.0	55.3
1007	8 Victoria Barracks Town Parks	53.0	53.4	53.2	53.5
1008	2 Carlisle Road Town Parks	62.0	62.3	61.2	61.5
1009	54 Lepper Street Town Parks	53.7	54.1	53.9	54.2
1011	13 Carlisle Road Town Parks	61.2	61.7	61.3	61.7
1012	18 Maralin Place Town Parks	54.1	54.4	54.2	54.5
1013	21 Carlisle Square Town Parks	62.5	62.7	62.8	63.0
1014	14 St James Mews Town Parks	53.7	54.1	53.8	54.1
1015	31 Carlisle Parade Town Parks	53.6	53.9	53.8	54.1
1016	7 Sheridan Street Town Parks	54.3	54.7	54.4	54.7
1017	24 Maralin Place Town Parks	51.5	51.8	51.6	51.9
1018	80 Lepper Street Town Parks	55.2	55.6	55.4	55.7
1019	11 St. James Street Town Parks	51.6	51.9	51.7	52.0
1020	2 Carlisle Square Town Parks	56.7	57.0	56.8	57.1
1021	42 Carlisle Road Town Parks	57.5	57.8	57.6	57.9
1022	16 Carlisle Walk Town Parks	54.0	54.3	54.2	54.5
1023	8b Victoria Parade Town Parks	61.3	61.7	61.5	61.8
1024	64 Lepper Street Town Parks	55.2	55.5	55.3	55.6
1025	13 Bruslee Way Town Parks	53.8	54.2	54.0	54.3
1026	1 Carlisle Parade Town Parks	54.1	54.4	54.3	54.6
1027	18 Vicinage Park Town Parks	52.4	52.8	52.5	52.9
1028	11 Cranburn Street Town Parks	51.6	52.0	51.7	52.1
1029	3 Sheridan Street Town Parks	50.8	51.2	50.9	51.2
1030	21 Carlisle Parade Town Parks	56.4	56.8	56.7	56.9
1031	12 Vicinage Park Town Parks	53.1	53.5	53.2	53.5
1032	21 Cranburn Street Town Parks	53.7	54.1	53.8	54.1
1033	70 Sheridan Street Town Parks	52.2	52.6	52.3	52.6
1034	22 Pim Street Town Parks	54.7	55.0	55.1	55.5
1035	20 Carlisle Square Town Parks	57.2	57.5	57.4	57.7
1036	64 Sheridan Street Town Parks	54.0	54.3	54.0	54.3
1037	48 Lepper Street Town Parks	56.4	56.7	56.5	56.8
1038	84 Antrim Road Town Parks	54.7	55.1	54.9	55.2
1039	3a Vicinage Park Town Parks	53.6	54.0	53.7	54.0

Ref	Address	Predicted Sound Level, LA10,18h dB			
		2021DM	2035DM	2021DS	2035DS
1040	14 Victoria Parade Town Parks	63.7	64.1	63.9	64.3
1041	14 Bruslee Way Town Parks	54.9	55.5	55.1	55.4
1042	17 Carlisle Terrace Town Parks	55.1	55.4	55.2	55.5
1043	37 Carlisle Terrace Town Parks	56.5	56.8	56.6	56.9
1044	8 Pim Street Town Parks	55.4	55.7	55.6	55.9
1045	2 Vicinage Park Town Parks	55.9	56.3	55.9	56.3
1046	38 Dawson Street Town Parks	55.8	56.2	56.0	56.3
1047	39 Carlisle Square Town Parks	55.2	55.5	55.4	55.7
1048	75 Antrim Road Town Parks	53.5	53.8	53.6	53.9
1049	28 Dawson Street Town Parks	51.3	51.7	51.5	51.8
1050	36 Victoria Parade Town Parks	62.8	63.2	62.9	63.3
1051	13 Cranburn Street Town Parks	51.5	51.9	51.6	52.0
1052	9 Carlisle Terrace Town Parks	53.9	54.2	54.0	54.3
1053	9 Cranburn Street Town Parks	50.7	51.1	50.8	51.2
1054	9 Victoria Barracks Town Parks	52.8	53.2	53.0	53.3
1055	14 Ludlow Square Town Parks	55.0	55.4	55.2	55.6
1056	8 Vicinage Park Town Parks	53.5	53.9	53.6	53.9
1058	14 Vicinage Park Town Parks	50.9	51.3	51.0	51.4
1059	21 Dawson Street Town Parks	51.6	52.0	51.7	52.1
1060	2 Sheridan Street Town Parks	50.7	51.0	50.8	51.1
1061	3 Carlisle Road Town Parks	55.4	55.8	55.7	56.0
1062	10 Carlisle Road Town Parks	56.7	57.0	57.0	57.3
1063	33 Lepper Street Town Parks	56.0	56.3	56.1	56.4
1065	54 Duncairn Parade Town Parks	55.5	55.9	55.7	56.0
1066	32 Pinkerton Walk Town Parks	53.2	53.6	53.5	53.8
1067	8 Churchill Street Town Parks	55.2	55.5	55.3	55.6
1068	3 Carlisle Terrace Town Parks	56.8	57.2	57.1	57.5
1069	78 Antrim Road Town Parks	50.9	51.2	51.0	51.3
1070	37 Carlisle Square Town Parks	55.8	56.1	56.0	56.3
1071	22 Maralin Place Town Parks	51.0	51.4	51.1	51.5
1072	16 Sheridan Street Town Parks	54.5	54.8	54.6	54.9
1073	32 Pim Street Town Parks	56.6	56.9	57.0	57.4
1074	17 Ludlow Square Town Parks	57.5	57.9	57.7	58.0

Ref	Address	Predicted Sound Level, LA10,18h dB			
		2021DM	2035DM	2021DS	2035DS
1075	13 Carlisle Square Town Parks	56.2	56.5	56.3	56.6
1076	36 Carlisle Square Town Parks	57.3	57.6	57.5	57.8
1077	5 Sheridan Street Town Parks	50.8	51.2	50.9	51.2
1078	86 Antrim Road Town Parks	54.6	54.9	54.7	55.0
1079	8 Carlisle Square Town Parks	59.0	59.3	59.1	59.4
1081	33 Carlisle Parade Town Parks	57.7	58.0	57.8	58.1
1082	37 Carlisle Road Town Parks	55.0	55.3	55.2	55.5
1083	1 Carlisle Terrace Town Parks	57.6	57.9	57.9	58.2
1084	7 St. James Street Town Parks	50.1	50.5	50.3	50.6
1085	5 Bruslee Way Town Parks	57.1	57.5	57.3	57.6
1086	19 Cranburn Street Town Parks	51.8	52.2	51.9	52.3
1087	13 Carlisle Parade Town Parks	53.8	54.1	54.0	54.3
1088	27 Carlisle Road Town Parks	55.9	56.2	56.0	56.3
1089	12 Churchill Street Town Parks	53.3	53.6	53.6	53.8
1090	22 Carlisle Walk Town Parks	57.8	58.2	58.0	58.3
1091	9 St James Mews Town Parks	53.4	53.8	53.5	53.8
1092	8 Kinnaird Street Town Parks	51.9	52.2	52.1	52.4
1093	8 St James Mews Town Parks	53.2	53.5	53.3	53.6
1094	22 Carlisle Road Town Parks	56.1	56.4	56.4	56.6
1095	34 Carlisle Road Town Parks	58.1	58.4	58.4	58.6
1096	25 Sheridan Street Town Parks	50.4	50.8	50.6	50.9
1097	24 Victoria Parade Town Parks	59.6	59.9	59.8	60.1
1098	3 Bruslee Way Town Parks	56.3	56.6	56.5	56.8
1100	9 Carlisle Square Town Parks	55.2	55.5	55.3	55.6
1101	11 Sheridan Street Town Parks	50.8	51.2	50.9	51.2
1102	10 Bruslee Way Town Parks	54.3	54.7	54.5	54.9
1103	88 Antrim Road Town Parks	49.9	50.3	50.1	50.4
1104	7 Carlisle Road Town Parks	55.9	56.2	56.1	56.4
1105	33 Carlisle Terrace Town Parks	56.0	56.4	56.2	56.5
1106	54 Victoria Parade Town Parks	61.1	61.6	61.2	61.6
1107	17 Carlisle Square Town Parks	54.8	55.1	55.0	55.3
1108	84 Lepper Street Town Parks	54.9	55.3	55.2	55.5
1109	7 Cranburn Street Town Parks	51.0	51.4	51.2	51.5

Ref	Address	Predicted Sound Level, LA10,18h dB			
		2021DM	2035DM	2021DS	2035DS
1110	74 Antrim Road Town Parks	55.5	55.8	55.6	55.9
1111	34 Bruslee Way Town Parks	55.1	55.5	55.4	55.7
1112	31 Carlisle Road Town Parks	56.4	56.7	56.7	56.9
1113	11 Carlisle Parade Town Parks	57.3	57.6	57.5	57.8
1115	7 Vicinage Park Town Parks	53.0	53.4	53.1	53.4
1116	13 Ludlow Square Town Parks	56.5	56.9	56.7	57.0
1117	4 Carlisle Walk Town Parks	56.7	57.1	57.0	57.2
1118	28 Bruslee Way Town Parks	55.7	56.0	55.8	56.1
1119	18 Carlisle Walk Town Parks	52.4	52.7	52.6	52.9
1120	5 New Lodge Road Town Parks	65.2	65.6	65.5	65.9
1121	12 Hardinge Place Town Parks	55.5	55.9	55.8	56.1
1122	119 North Queen Street Town Parks	72.5	72.9	73.5	73.9
1123	Saunders Fruit & Veg 8 New Lodge Road Town	64.9	65.5	66.0	66.4
1124	8 Mccleery Street Town Parks	61.7	62.2	62.2	62.5
1125	46 North Queen Street Town Parks	73.2	73.6	74.2	74.6
1126	1 New Lodge Place Town Parks	69.6	70.0	69.6	70.0
1127	1 Earl Close Town Parks	63.3	64.0	64.8	65.2
1128	133 North Queen Street Town Parks	73.2	73.6	74.2	74.6
1129	9 Spamount Street Town Parks	58.5	59.0	58.9	59.3
1130	Higgins Butchers 2 New Lodge Road Town Parks	66.9	67.4	67.7	68.1
1131	82 North Queen Street Town Parks	72.1	72.8	73.8	74.3
1132	98 North Queen Street Town Parks	72.9	73.6	74.6	75.0
1133	8 Hardinge Place Town Parks	58.6	59.0	58.8	59.1
1134	10 Moffatt Street Town Parks	61.5	61.9	61.8	62.1
1135	11 New Lodge Place Town Parks	55.9	56.3	56.1	56.5
1136	13 Hardinge Place Town Parks	60.1	60.5	60.4	60.7
1137	1 New Lodge Road Town Parks	64.7	65.2	65.4	65.8
1138	13 New Lodge Place Town Parks	59.7	60.1	59.8	60.2
1139	Grainne House New Lodge Road Town Parks	72.1	72.8	73.8	74.1
1140	1 Hillman Street Town Parks	60.8	61.4	61.9	62.2
1141	74 North Queen Street Town Parks	72.8	73.5	74.6	75.0
1142	4a Victoria Parade Town Parks	66.0	66.6	66.8	67.2
1143	5 Spamount Street Town Parks	59.0	59.5	59.7	60.0
1144	1 Mccleery Street Town Parks	59.9	60.3	60.1	60.4

Ref	Address	Predicted Sound Level, LA10,18h dB			
		2021DM	2035DM	2021DS	2035DS
1145	7 North Hill Street Town Parks	61.3	61.6	61.2	61.4
1146	22 New Lodge Place Town Parks	56.9	57.3	57.0	57.4
1147	10 Hardinge Place Town Parks	59.2	59.6	59.5	59.8
1148	48 North Queen Street Town Parks	73.3	73.7	74.4	74.7
1149	9 North Hill Street Town Parks	61.2	61.5	61.0	61.3
1150	3 Hardinge Place Town Parks	58.3	58.7	58.8	59.1
1151	26 North Hill Street Town Parks	58.7	59.1	58.9	59.2
1152	17 New Lodge Road Town Parks	69.0	69.4	69.1	69.5
1153	3 Southwell Street Town Parks	62.1	62.5	62.1	62.4
1154	5 New Lodge Place Town Parks	62.4	62.8	62.5	62.8
1155	16 North Hill Street Town Parks	61.3	61.6	61.5	61.7
1156	84 North Queen Street Town Parks	72.4	73.1	74.2	74.6
1157	96 North Queen Street Town Parks	72.8	73.5	74.5	74.9
1158	15 New Lodge Place Town Parks	58.6	59.0	58.7	59.1
1159	111 North Queen Street Town Parks	72.9	73.2	73.7	74.1
1160	94 North Queen Street Town Parks	72.8	73.5	74.5	74.9
1161	The Patisserie 6 New Lodge Road Town Parks	65.5	66.1	66.6	67.0
1162	88 North Queen Street Town Parks	72.5	73.2	74.3	74.7
1163	5 Southwell Street Town Parks	57.1	57.4	57.3	57.6
1164	9 Southwell Street Town Parks	60.4	60.7	60.4	60.7
1165	10 Spamount Street Town Parks	60.6	61.2	61.5	61.9
1166	14 Hardinge Place Town Parks	59.4	59.8	59.8	60.2
1167	11 North Hill Street Town Parks	59.9	60.2	59.8	60.1
1168	20 North Hill Street Town Parks	61.1	61.5	61.4	61.6
1169	2 Hillman Street Town Parks	61.6	62.2	62.7	63.1
1170	5 Mccleery Street Town Parks	59.6	59.9	59.8	60.1
1171	6 Mccleery Street Town Parks	60.1	60.5	60.5	60.7
1172	3 Earl Close Town Parks	64.9	65.5	66.3	66.7
1173	52 North Queen Street Town Parks	73.2	73.6	74.3	74.6
1174	10 Mccleery Street Town Parks	66.2	66.8	67.3	67.7
1175	18 New Lodge Place Town Parks	57.3	57.7	57.5	57.8
1176	11 Spamount Street Town Parks	58.0	58.4	58.9	59.2
1177	8 Southwell Street Town Parks	61.8	62.3	61.6	62.0
1178	8 Earl Close Town Parks	60.1	60.6	61.1	61.4

Ref	Address	Predicted Sound Level, LA10,18h dB			
		2021DM	2035DM	2021DS	2035DS
1179	5 Earl Close Town Parks	60.4	60.9	61.5	61.9
1180	4 Spamount Street Town Parks	61.1	61.7	62.0	62.4
1181	68 North Queen Street Town Parks	72.5	73.1	74.0	74.4
1182	7 Mccleery Street Town Parks	62.0	62.5	62.4	62.7
1183	117 North Queen Street Town Parks	72.5	72.9	73.5	73.8
1184	102 North Queen Street Town Parks	71.7	72.4	73.3	73.7
1185	121 North Queen Street Town Parks	72.5	72.8	73.4	73.8
1186	2 Mccleery Street Town Parks	59.8	60.1	60.1	60.3
1187	8 Spamount Street Town Parks	61.2	61.7	62.1	62.4
1188	9 New Lodge Road Town Parks	69.2	69.6	69.4	69.7
1189	100 North Queen Street Town Parks	71.8	72.4	73.4	73.7
1190	18 Spamount Street Town Parks	55.3	55.6	55.4	55.8
1191	6 Earl Close Town Parks	61.8	62.3	62.7	63.0
1192	10 North Hill Street Town Parks	60.7	61.2	60.9	61.3
1193	4 North Hill Street Town Parks	61.0	61.5	61.4	61.8
1194	56 North Queen Street Town Parks	71.8	72.4	73.3	73.6
1195	4 Pinkerton Walk Town Parks	62.2	62.6	62.3	62.6
1196	4 Southwell Street Town Parks	60.8	61.2	60.7	61.1
1197	4 Earl Close Town Parks	61.8	62.4	63.0	63.4
1198	135 North Queen Street Town Parks	69.7	70.3	70.9	71.3
1199	127 North Queen Street Town Parks	72.7	73.1	73.8	74.2
1200	11 Southwell Street Town Parks	60.2	60.5	60.3	60.6
1201	14 Spamount Street Town Parks	58.3	58.7	58.5	58.8
1202	131 North Queen Street Town Parks	73.1	73.5	74.2	74.6
1203	70 North Queen Street Town Parks	71.2	71.9	73.0	73.5
1204	125 North Queen Street Town Parks	72.8	73.2	73.8	74.2
1205	1 Hardinge Place Town Parks	68.6	69.1	69.0	69.4
1206	6 North Hill Street Town Parks	62.6	63.1	62.8	63.3
1207	1 Spamount Street Town Parks	59.3	59.8	60.0	60.4
1208	2 North Hill Street Town Parks	61.8	62.3	62.2	62.6
1209	54 North Queen Street Town Parks	73.1	73.6	74.2	74.6
1210	44 North Queen Street Town Parks	73.3	73.6	74.3	74.6
1211	1 Southwell Street Town Parks	61.6	62.1	61.7	62.1
1212	7 Spamount Street Town Parks	58.7	59.2	59.2	59.5

Ref	Address	Predicted Sound Level, LA10,18h dB			
		2021DM	2035DM	2021DS	2035DS
1213	7 Southwell Street Town Parks	58.3	58.7	58.5	58.8
1214	2 Earl Close Town Parks	64.2	64.9	65.7	66.1
1215	4 Hardinge Place Town Parks	58.8	59.3	59.3	59.6
1216	4b Victoria Parade Town Parks	65.7	66.3	66.4	66.8
1217	6 Hillman Street Town Parks	62.5	63.1	63.4	63.8
1218	50 North Queen Street Town Parks	73.3	73.7	74.3	74.7
1219	9 Mccleery Street Town Parks	64.3	64.8	65.1	65.5
1220	6 Hardinge Place Town Parks	55.9	56.3	56.3	56.7
1221	21 Ludlow Square Town Parks	53.2	53.6	53.5	53.8
1222	5 North Hill Street Town Parks	61.5	61.8	61.4	61.7
1223	Shauna's Newsagents 4 New Lodge Road Town	66.0	66.6	67.0	67.4
1224	113 North Queen Street Town Parks	72.9	73.2	73.8	74.2
1225	76 North Queen Street Town Parks	72.1	72.8	73.9	74.3
1226	4 Mccleery Street Town Parks	59.8	60.2	60.1	60.4
1227	3 Mccleery Street Town Parks	59.8	60.1	60.0	60.3
1228	6 Southwell Street Town Parks	60.8	61.3	60.7	61.1
1229	14 North Hill Street Town Parks	61.1	61.9	61.4	61.7
1230	2 Southwell Street Town Parks	60.9	61.4	61.0	61.4
1231	9 Earl Close Town Parks	63.4	63.9	63.5	64.0
1232	6 Pinkerton Walk Town Parks	58.7	59.1	58.9	59.3
1233	58 North Queen Street Town Parks	69.4	70.1	71.0	71.3
1234	22 North Hill Street Town Parks	59.3	59.6	59.5	59.8
1235	9 Hardinge Place Town Parks	55.2	55.6	55.5	55.8
1236	6 Hillman Close Town Parks	59.8	60.2	60.3	60.6
1237	11 Hardinge Place Town Parks	55.4	55.8	55.7	56.0
1238	92 North Queen Street Town Parks	72.8	73.5	74.5	74.9
1239	18 North Hill Street Town Parks	61.3	61.6	61.5	61.8
1240	78 North Queen Street Town Parks	72.8	73.5	74.5	75.0
1241	2 Pinkerton Walk Town Parks	70.0	70.4	70.1	70.4
1242	24 North Hill Street Town Parks	59.5	59.9	59.8	60.1
1243	12 North Hill Street Town Parks	60.5	61.0	60.6	61.1
1244	13 New Lodge Road Town Parks	69.1	69.5	69.2	69.6
1245	8 North Hill Street Town Parks	62.6	63.1	62.7	63.2

Ref	Address	Predicted Sound Level, LA10,18h dB			
		2021DM	2035DM	2021DS	2035DS
1246	7 Earl Close Town Parks	60.1	60.6	61.0	61.4
1247	3 North Hill Street Town Parks	61.1	61.5	61.1	61.5
1249	72 North Queen Street Town Parks	72.2	72.8	73.9	74.3
1250	123 North Queen Street Town Parks	72.8	73.2	73.8	74.2
1251	90 North Queen Street Town Parks	72.2	72.9	73.9	74.3
1252	115 North Queen Street Town Parks	71.6	71.9	72.6	73.0
1253	2b Victoria Parade Town Parks	66.8	67.4	67.8	68.2
1254	2 Spamount Street Town Parks	62.9	63.5	64.1	64.4
1255	6 Spamount Street Town Parks	61.5	62.1	62.5	62.9
1256	2a Victoria Parade Town Parks	67.6	68.3	68.8	69.2
1257	1 North Hill Street Town Parks	64.0	64.5	64.6	65.0
1258	7 Hardinge Place Town Parks	56.4	56.7	56.7	57.0
1259	86 North Queen Street Town Parks	72.2	72.9	74.0	74.4
1260	13 North Hill Street Town Parks	58.8	59.1	58.9	59.2
1261	80 North Queen Street Town Parks	71.8	72.5	73.6	74.0
1262	129 North Queen Street Town Parks	73.1	73.5	74.1	74.5
1263	2 Hardinge Place Town Parks	59.3	59.7	59.9	60.2
1264	8 Pinkerton Walk Town Parks	56.0	56.4	56.5	56.8
1265	4 Hillman Street Town Parks	61.9	62.5	62.9	63.3
1266	20 Ludlow Square Town Parks	55.2	55.6	55.4	55.8
1267	1 Princes Dock Street Town Parks	58.7	59.1	58.7	58.9
1268	5 Princes Dock Street Town Parks	59.1	59.5	59.2	59.4
1269	14 Pilot Street Town Parks	57.7	58.0	57.6	57.9
1270	7 Princes Dock Street Town Parks	59.0	59.4	59.0	59.3
1271	1 Princes Dock Street Town Parks	58.9	59.3	58.8	59.1
1272	11 Princes Dock Street Town Parks	55.1	55.5	55.1	55.6
1273	3 Princes Dock Street Town Parks	59.1	59.4	59.0	59.2
1274	16 Pilot Street Town Parks	57.8	58.2	57.8	58.0
1275	46 Princes Dock Street Town Parks	54.4	54.8	54.4	54.7
1276	12 Pilot Street Town Parks	56.2	56.5	56.3	56.6
1277	2 Arnon Street Town Parks	57.2	57.6	57.3	57.7
1278	56 Sherbrook Terrace Town Parks	58.4	58.6	58.5	58.7
1279	22 Wall Street Town Parks	56.2	56.5	56.3	56.5

Ref	Address	Predicted Sound Level, LA10,18h dB			
		2021DM	2035DM	2021DS	2035DS
1280	44 Sherbrook Terrace Town Parks	62.2	62.5	62.4	62.7
1281	9 Wall Street Town Parks	57.4	57.8	57.5	57.8
1282	62 Sherbrook Terrace Town Parks	58.8	59.0	59.0	59.2
1283	1 Clifton House Mews Town Parks	60.3	60.6	60.7	61.0
1284	3 Lower Regent Street Town Parks	56.1	56.5	56.3	56.7
1285	5 Alton Street Town Parks	57.3	57.6	57.5	57.8
1286	2 Tyrone Street Town Parks	56.2	56.5	56.4	56.7
1287	10 Antrim Street Town Parks	57.2	57.5	57.3	57.6
1288	18 Sherbrook Terrace Town Parks	58.9	59.2	59.1	59.4
1289	35 Carrick Hill Town Parks	73.8	74.3	73.8	74.3
1290	1 Alton Street Town Parks	57.5	57.8	57.7	58.0
1291	26 Lancaster Street Town Parks	59.3	59.7	59.9	60.3
1292	8 Denmark Street Town Parks	56.4	56.7	56.5	56.8
1293	51 Stanhope Street Town Parks	58.9	59.2	59.1	59.4
1294	65 Carrick Hill Town Parks	68.4	68.8	68.6	69.0
1295	John Blacking House Lower Regent Street Town	57.1	57.5	57.4	57.7
1296	10 Tyrone Street Town Parks	57.4	57.8	57.5	57.9
1297	37 Stanhope Street Town Parks	59.1	59.3	59.2	59.4
1298	14 Stanhope Street Town Parks	58.1	58.3	58.2	58.4
1299	21 Wall Street Town Parks	57.9	58.2	58.0	58.3
1300	30 Sherbrook Terrace Town Parks	57.6	58.0	57.6	58.1
1301	9 Tyrone Street Town Parks	59.1	59.5	59.1	59.5
1302	49 Carrick Hill Town Parks	56.4	56.8	56.6	57.0
1303	18 Wall Street Town Parks	56.6	56.9	56.7	57.5
1304	4 Alton Street Town Parks	58.2	58.5	58.4	58.6
1305	1 Tyrone Street Town Parks	58.5	58.8	58.5	58.9
1306	37 Carrick Hill Town Parks	73.9	74.3	73.9	74.4
1307	11 Tyrone Street Town Parks	59.6	60.0	59.7	60.0
1308	38 Sherbrook Terrace Town Parks	59.7	59.9	59.9	60.1
1309	34 Sherbrook Terrace Town Parks	57.2	57.6	57.3	57.6
1310	12 Sherbrook Terrace Town Parks	60.0	60.3	60.3	60.6
1311	4 Stanhope Street Town Parks	59.2	59.4	59.6	59.9
1312	24 Wall Street Town Parks	55.9	56.3	56.1	56.4
1313	15 Tyrone Street Town Parks	60.2	60.5	60.2	60.6

Ref	Address	Predicted Sound Level, LA10,18h dB			
		2021DM	2035DM	2021DS	2035DS
1314	5 Fishers Court Town Parks	59.8	60.2	60.3	60.6
1315	46 Sherbrook Terrace Town Parks	63.2	63.4	63.3	63.6
1316	3 Denmark Street Town Parks	59.7	60.2	59.8	60.2
1317	70 Sherbrook Terrace Town Parks	57.8	58.0	58.0	58.2
1318	12 Tyrone Street Town Parks	56.9	57.3	57.0	57.4
1319	79 North Queen Street Town Parks	72.4	72.7	73.2	73.5
1320	17 Denmark Street Town Parks	56.1	56.4	56.2	56.5
1321	83 North Queen Street Town Parks	72.4	72.8	73.2	73.6
1322	41 Carrick Hill Town Parks	73.4	73.9	73.5	73.9
1323	21 Denmark Street Town Parks	55.7	56.0	55.8	56.1
1324	2 Stanhope Street Town Parks	59.9	60.2	60.3	60.6
1325	12 North Queen Street Town Parks	71.0	71.4	72.0	72.4
1326	28 Denmark Street Town Parks	55.6	55.9	55.7	56.0
1327	6 Tyrone Street Town Parks	56.9	57.3	57.0	57.4
1328	3 Alton Street Town Parks	57.1	57.4	57.3	57.6
1329	1 Denmark Street Town Parks	61.1	61.5	61.1	61.6
1330	8 Clifton House Mews Town Parks	58.9	59.2	59.3	59.6
1331	47 Stanhope Street Town Parks	58.9	59.2	59.1	59.4
1332	39 Carrick Hill Town Parks	73.9	74.4	73.9	74.4
1333	9 Clifton House Mews Town Parks	58.5	58.8	58.8	59.1
1334	32 York Lane Town Parks	63.3	63.7	64.4	64.9
1335	3 Wall Street Town Parks	57.4	57.6	57.7	58.0
1336	19 Denmark Street Town Parks	54.0	54.3	54.1	54.4
1337	11 Wall Street Town Parks	57.4	57.6	57.5	57.8
1338	41 Stanhope Street Town Parks	58.9	59.2	59.1	59.3
1339	55 Stanhope Street Town Parks	59.2	59.5	59.3	59.6
1340	14 Denmark Street Town Parks	56.4	56.7	56.4	56.7
1341	205 Donegall Street Town Parks	71.5	71.9	72.2	72.6
1342	10 Stanhope Street Town Parks	58.8	59.0	59.0	59.2
1343	19 Tyrone Street Town Parks	54.3	54.7	54.4	54.8
1344	31 Carrick Hill Town Parks	72.7	73.2	72.7	73.2
1345	13 Kildare Street Town Parks	56.4	56.8	56.5	56.8
1346	22 Denmark Street Town Parks	56.0	56.3	56.0	56.3

Ref	Address	Predicted Sound Level, LA10,18h dB			
		2021DM	2035DM	2021DS	2035DS
1347	10 North Queen Street Town Parks	71.1	71.4	72.1	72.5
1348	47 Carrick Hill Town Parks	56.5	56.9	56.7	57.1
1349	14 Sherbrook Terrace Town Parks	58.9	59.2	59.3	59.6
1350	4 North Queen Street Town Parks	66.9	67.3	68.3	68.9
1351	60 Sherbrook Terrace Town Parks	58.8	59.0	59.0	59.2
1352	11a Tyrone Street Town Parks	54.8	55.1	54.9	55.2
1353	12 Denmark Street Town Parks	58.9	59.3	59.0	59.3
1354	2 Alton Street Town Parks	58.1	58.4	58.3	58.6
1355	16 Stanhope Street Town Parks	58.1	58.4	58.3	58.6
1356	2 Antrim Street Town Parks	54.9	55.2	55.0	55.3
1357	18 Tyrone Street Town Parks	61.3	61.7	61.3	61.7
1358	1 Plunkett Court Town Parks	57.0	57.3	57.3	57.6
1359	5 Tyrone Street Town Parks	54.2	54.6	54.4	54.7
1360	32 Lancaster Street Town Parks	59.6	60.0	60.5	60.9
1361	8 Arnon Street Town Parks	54.9	55.2	55.0	55.4
1362	8 Sherbrook Terrace Town Parks	60.7	61.2	60.7	61.2
1363	6 Sherbrook Terrace Town Parks	61.2	61.7	61.2	61.8
1364	40 Sherbrook Terrace Town Parks	59.1	59.3	59.4	59.7
1365	John Blacking House Lower Regent Street Town	56.8	57.2	57.1	57.5
1366	10 Sherbrook Terrace Town Parks	60.3	60.6	60.6	60.9
1367	33 Carrick Hill Town Parks	73.7	74.2	73.7	74.2
1368	24 Lancaster Street Town Parks	60.8	61.1	61.2	61.6
1369	49 Stanhope Street Town Parks	59.0	59.2	59.1	59.4
1370	5 Plunkett Court Town Parks	56.0	56.3	56.2	56.5
1371	36 Sherbrook Terrace Town Parks	59.6	59.8	59.7	60.0
1372	8 Tyrone Street Town Parks	56.3	56.6	56.4	56.8
1373	22 Sherbrook Terrace Town Parks	59.0	59.2	59.3	59.6
1374	23 Kildare Street Town Parks	56.0	56.3	56.1	56.4
1375	48 Sherbrook Terrace Town Parks	56.8	57.0	56.9	57.1
1376	11 Denmark Street Town Parks	57.0	57.3	57.0	57.3
1377	15 Denmark Street Town Parks	56.2	56.5	56.3	56.6
1378	15 Wall Street Town Parks	56.0	56.3	56.1	56.4
1379	20 Wall Street Town Parks	57.0	57.3	57.3	57.6
1380	1 Pepperhill Street Town Parks	59.1	59.4	59.5	59.8

Ref	Address	Predicted Sound Level, LA10,18h dB			
		2021DM	2035DM	2021DS	2035DS
1381	2 Denmark Street Town Parks	60.6	61.0	60.6	61.1
1382	12 Antrim Street Town Parks	57.9	58.2	58.0	58.3
1383	9 Plunkett Court Town Parks	57.9	58.2	57.9	58.3
1384	19 Stanhope Street Town Parks	59.1	59.3	59.3	59.6
1385	17 Tyrone Street Town Parks	60.6	61.0	60.6	61.0
1386	27 Stanhope Street Town Parks	59.0	59.2	59.2	59.5
1387	77 North Queen Street Town Parks	67.8	68.1	68.9	69.3
1388	2 Clifton House Mews Town Parks	59.8	60.1	60.1	60.4
1389	72 Sherbrook Terrace Town Parks	56.7	57.0	56.8	57.0
1390	81 North Queen Street Town Parks	72.4	72.8	73.2	73.6
1391	54 Sherbrook Terrace Town Parks	58.1	58.4	58.2	58.5
1392	24 Denmark Street Town Parks	56.9	57.2	57.0	57.2
1393	20 Sherbrook Terrace Town Parks	62.4	62.7	62.6	62.9
1394	32 Sherbrook Terrace Town Parks	57.3	57.7	57.3	57.7
1395	7 Tyrone Street Town Parks	59.0	59.3	59.1	59.4
1396	6 Stanhope Street Town Parks	59.1	59.3	59.5	59.8
1397	27 Carrick Hill Town Parks	72.4	72.9	72.4	72.9
1398	6 Plunkett Court Town Parks	59.0	59.4	59.1	59.5
1399	7 Wall Street Town Parks	56.1	56.4	56.2	56.5
1400	21 Kildare Street Town Parks	56.5	56.9	56.5	56.8
1401	19 Wall Street Town Parks	57.8	58.2	57.9	58.2
1402	14 North Queen Street Town Parks	71.1	71.4	71.9	72.3
1403	51 Carrick Hill Town Parks	73.4	73.9	73.4	73.9
1404	191a Donegall Street Town Parks	65.0	65.4	65.8	66.3
1405	25 Denmark Street Town Parks	56.0	56.3	56.1	56.4
1406	20 Denmark Street Town Parks	55.6	55.9	55.7	56.0
1407	17 Wall Street Town Parks	57.2	57.5	57.4	57.6
1408	4 Plunkett Court Town Parks	57.1	57.4	57.4	57.7
1409	1 Fishers Court Town Parks	60.4	60.8	60.9	61.2
1410	4 Sherbrook Terrace Town Parks	62.6	63.1	62.7	63.2
1411	7 Pepperhill Street Town Parks	59.2	59.5	59.3	59.6
1412	43 Carrick Hill Town Parks	73.7	74.2	73.7	74.2
1413	15 Kildare Street Town Parks	56.6	56.9	56.6	56.9

Ref	Address	Predicted Sound Level, LA10,18h dB			
		2021DM	2035DM	2021DS	2035DS
1414	5 Wall Street Town Parks	57.1	57.3	57.3	57.5
1415	18 Denmark Street Town Parks	56.1	56.4	56.2	56.5
1416	8 Stanhope Street Town Parks	59.1	59.3	59.4	59.7
1417	26 Wall Street Town Parks	56.4	56.7	56.5	56.8
1418	4 Antrim Street Town Parks	57.0	57.3	57.1	57.4
1419	7 Denmark Street Town Parks	56.2	56.6	56.3	56.6
1420	1 Lower Regent Street Town Parks	55.5	55.9	55.7	56.1
1421	39 Stanhope Street Town Parks	58.9	59.2	59.1	59.3
1422	11 Plunkett Court Town Parks	54.3	54.7	54.4	54.8
1423	43 Stanhope Street Town Parks	59.0	59.2	59.1	59.4
1424	19 Kildare Street Town Parks	56.6	56.9	56.7	57.1
1425	4 Denmark Street Town Parks	58.8	59.3	58.9	59.3
1426	7 Plunkett Court Town Parks	54.4	54.8	54.6	54.9
1427	6 Denmark Street Town Parks	57.2	57.6	57.3	57.6
1429	13 Denmark Street Town Parks	58.2	58.6	58.3	58.7
1430	17 Kildare Street Town Parks	56.3	56.7	56.5	56.8
1431	8 Antrim Street Town Parks	57.5	57.7	57.6	57.8
1432	18 Stanhope Street Town Parks	57.7	58.0	57.9	58.1
1433	27 Denmark Street Town Parks	55.8	56.1	55.9	56.1
1434	42 Sherbrook Terrace Town Parks	59.4	59.7	59.6	59.9
1435	1 Wall Street Town Parks	56.7	57.0	56.9	57.2
1436	7 Lower Regent Street Town Parks	55.2	55.6	55.4	55.8
1437	25 Carrick Hill Town Parks	72.5	73.0	72.5	73.0
1438	10 Clifton House Mews Town Parks	61.5	61.8	62.2	62.6
1439	63 Lancaster Street Town Parks	69.9	70.3	70.9	71.4
1440	48 Lancaster Street Town Parks	70.2	70.5	71.3	71.7
1441	26 Sherbrook Terrace Town Parks	62.5	62.7	62.6	62.9
1442	20 Tyrone Street Town Parks	61.6	62.1	61.6	62.1
1443	10 Denmark Street Town Parks	56.8	57.1	56.9	57.2
1444	5 Denmark Street Town Parks	58.0	58.4	58.0	58.4
1445	1 Antrim Street Town Parks	56.9	57.2	57.0	57.3
1446	23 Carrick Hill Town Parks	72.6	73.1	72.6	73.1
1447	50 Sherbrook Terrace Town Parks	55.7	56.0	55.8	56.1

Ref	Address	Predicted Sound Level, LA10,18h dB			
		2021DM	2035DM	2021DS	2035DS
1448	45 Carrick Hill Town Parks	73.7	74.2	73.7	74.2
1449	6 North Queen Street Town Parks	70.9	71.3	72.2	72.6
1450	28 Wall Street Town Parks	55.7	56.0	55.8	56.1
1451	9 Pepperhill Street Town Parks	59.5	59.7	59.6	60.0
1452	16 Denmark Street Town Parks	56.0	56.3	56.1	56.4
1453	24 Sherbrook Terrace Town Parks	63.9	64.1	64.2	64.3
1454	203 Donegall Street Town Parks	66.4	66.8	66.9	67.4
1455	201 Donegall Street Town Parks	66.1	66.5	66.7	67.2
1456	4 Arnon Street Town Parks	58.8	59.2	58.8	59.2
1457	8 Plunkett Court Town Parks	56.2	56.6	56.3	56.7
1458	53 Stanhope Street Town Parks	59.1	59.4	59.2	59.5
1459	6 Antrim Street Town Parks	57.3	57.6	57.4	57.7
1460	23 Stanhope Street Town Parks	59.1	59.4	59.3	59.6
1461	3 Plunkett Court Town Parks	58.0	58.3	58.2	58.7
1462	26 Denmark Street Town Parks	55.9	56.2	56.0	56.2
1463	66 Sherbrook Terrace Town Parks	61.1	61.3	61.2	61.4
1464	30 Lancaster Street Town Parks	60.7	61.1	61.3	61.7
1465	8 Alton Street Town Parks	58.6	58.9	58.8	59.1
1466	5 Lower Regent Street Town Parks	55.5	55.9	55.7	56.1
1467	31 Stanhope Street Town Parks	59.3	59.5	59.4	59.7
1468	29 Carrick Hill Town Parks	73.6	74.1	73.6	74.1
1470	12 Wall Street Town Parks	58.7	59.1	58.9	59.3
1471	45 Stanhope Street Town Parks	59.0	59.2	59.2	59.5
1472	23 Denmark Street Town Parks	56.5	56.8	56.6	56.9
1473	8 North Queen Street Town Parks	71.0	71.4	72.2	72.6
1474	2 Plunkett Court Town Parks	57.2	57.5	57.5	57.8
1475	14 Tyrone Street Town Parks	59.4	59.8	59.4	59.8
1476	12 Stanhope Street Town Parks	58.4	58.7	58.7	58.9
1477	58 Sherbrook Terrace Town Parks	55.9	56.2	55.9	56.3
1478	68 Sherbrook Terrace Town Parks	57.4	57.6	57.6	57.8
1479	16 Sherbrook Terrace Town Parks	59.3	59.6	59.7	60.0
1480	9 Denmark Street Town Parks	56.5	56.8	56.6	56.9
1481	64 Sherbrook Terrace Town Parks	58.4	58.6	58.5	58.8
1482	87 Carrick Hill Town Parks	74.6	75.1	74.6	75.1

Ref	Address	Predicted Sound Level, LA10,18h dB			
		2021DM	2035DM	2021DS	2035DS
1483	67 Carrick Hill Town Parks	74.9	75.4	74.9	75.4
1484	71 Carrick Hill Town Parks	74.5	75.0	74.5	75.0
1485	73 Carrick Hill Town Parks	74.5	74.9	74.5	75.0
1486	75 Carrick Hill Town Parks	74.4	74.9	74.5	74.9
1487	77 Carrick Hill Town Parks	74.4	74.9	74.4	74.9
1488	81 Carrick Hill Town Parks	74.3	74.8	74.3	74.8
1489	85 Carrick Hill Town Parks	74.2	74.7	74.2	74.7
1490	Clifton Nursing Home 2a Hopewell Avenue Town	60.2	60.7	60.2	60.7
1491	18 Fishers Court Town Parks	59.0	59.3	59.2	59.5
1492	13 Portland Place Town Parks	61.5	61.8	61.7	62.0
1493	10 Lancaster Terrace Town Parks	60.4	60.8	60.8	61.2
1494	1 Lancaster Terrace Town Parks	60.4	60.7	60.8	61.1
1495	7 Portland Place Town Parks	58.3	58.6	58.5	58.8
1496	39 Lancaster Street Town Parks	58.7	59.0	58.9	59.1
1497	33 Lancaster Street Town Parks	58.4	58.7	58.7	58.9
1498	37 Lancaster Street Town Parks	58.6	58.9	58.8	59.1
1499	12 Portland Place Town Parks	57.7	58.0	58.0	58.2
1500	35 Lancaster Street Town Parks	58.9	59.2	59.1	59.4
1501	29 Lancaster Street Town Parks	56.9	57.2	57.1	57.4
1502	Lincoln Avenue Clinic 43 Lancaster Street Town	59.1	59.4	59.2	59.6
1503	25 Lancaster Street Town Parks	56.2	56.5	56.4	56.7
1504	23 Lancaster Street Town Parks	57.3	57.6	57.5	57.8
1505	31 Lancaster Street Town Parks	58.5	58.8	58.6	58.9
1506	41 Lancaster Street Town Parks	58.9	59.2	59.1	59.4
1507	10 Portland Place Town Parks	58.7	59.0	58.9	59.2
1508	14 Lancaster Street Town Parks	60.7	61.1	60.9	61.2
1509	9 Portland Place Town Parks	57.8	58.1	58.0	58.3
1510	19 Thomas Street Town Parks	58.7	59.0	58.7	59.0
1511	11 Portland Place Town Parks	58.6	59.0	58.9	59.1
1512	8 Portland Place Town Parks	57.4	57.7	57.7	58.0
1513	4 Stephen Street Town Parks	61.6	62.0	61.6	62.1
1514	14 Stephen Street Town Parks	65.2	65.7	65.2	65.7
1515	10 Stephen Street Town Parks	65.3	65.8	65.3	65.8

Ref	Address	Predicted Sound Level, LA10,18h dB			
		2021DM	2035DM	2021DS	2035DS
1516	8 Stephen Street Town Parks	64.6	65.1	64.6	65.1
1517	23 Kent Street Town Parks	64.6	65.1	64.6	65.1
1518	12 Stephen Street Town Parks	63.2	63.6	63.2	63.7
1519	27 Kent Street Town Parks	67.9	68.4	67.9	68.4
1520	2 Stephen Street Town Parks	64.1	64.6	64.1	64.6
1521	6 Stephen Street Town Parks	64.4	64.9	64.4	64.9
1522	Sean Graham 12 Library Street Town Parks	54.9	55.3	55.0	55.4
1523	16 Stephen Street Town Parks	65.5	66.0	65.5	66.0
1524	25 Kent Street Town Parks	65.6	66.0	65.6	66.1
1525	17 Queens Square Town Parks	75.7	76.1	75.7	76.1
1526	59 Waring Street Town Parks	63.1	63.5	63.1	63.5
1527	7 Edward Street Town Parks	58.1	58.5	58.2	58.5
1528	12 Edward Street Town Parks	59.4	59.8	59.7	60.1
1529	13 Edward Street Town Parks	55.8	56.2	55.9	56.3
1530	20 Lancaster Street Town Parks	60.2	60.6	60.6	61.0
1531	12 Pinkerton Walk Town Parks	53.7	54.1	54.2	54.5
1532	14 New Lodge Place Town Parks	54.8	55.2	55.0	55.3
1533	16 New Lodge Place Town Parks	57.4	57.8	57.6	57.9
1534	18 Ludlow Square Town Parks	53.7	54.1	53.9	54.3
1535	19 Ludlow Square Town Parks	52.8	53.2	53.0	53.4
1536	17 Spamount Street Town Parks	57.0	57.4	57.0	57.3
1537	17 Meadow Place Town Parks	58.1	58.5	58.1	58.5
1538	40 North Queen Street Town Parks	73.3	73.7	74.3	74.6
1539	42 North Queen Street Town Parks	73.3	73.6	74.3	74.6
1540	8a Victoria Parade Town Parks	59.7	60.1	60.0	60.3
1541	6b Victoria Parade Town Parks	59.5	59.9	59.9	60.2
1542	6a Victoria Parade Town Parks	58.4	58.8	58.8	59.1
1543	104 North Queen Street Town Parks	72.1	72.8	73.7	74.1
1544	4 Hillman Close Town Parks	61.3	61.8	62.1	62.4
1545	7 Hillman Close Town Parks	55.6	56.1	55.9	56.2
1546	5 Hillman Close Town Parks	59.5	60.0	59.9	60.2
1547	2 Meadow Place Town Parks	58.7	59.1	59.1	59.4
1548	23 Ludlow Square Town Parks	58.0	58.4	58.3	58.6

Ref	Address	Predicted Sound Level, LA10,18h dB			
		2021DM	2035DM	2021DS	2035DS
1549	22 Ludlow Square Town Parks	55.2	55.5	55.3	55.7
1550	9 Ludlow Square Town Parks	58.7	59.1	58.8	59.2
1551	7 Ludlow Square Town Parks	61.3	61.7	61.3	61.7
1552	35 New Lodge Road Town Parks	68.4	68.8	68.4	68.8
1553	17 Lepper Street Town Parks	52.2	52.5	52.3	52.6
1554	60 Sheridan Street Town Parks	53.5	53.8	53.6	53.9
1555	62 Sheridan Street Town Parks	54.5	54.8	54.6	54.9
1556	26 Maralin Place Town Parks	55.4	55.8	55.5	55.8
1557	13 Sheridan Street Town Parks	50.8	51.1	50.9	51.2
1558	20 Mountcollyer Avenue Town Parks	61.6	62.0	61.6	62.0
1559	28 Cosgrave Heights Town Parks	59.0	59.4	59.1	59.5
1560	26 Cosgrave Heights Town Parks	58.5	58.9	58.5	58.9
1561	17a Stanhope Street Town Parks	59.3	59.6	59.8	60.1
1562	7 Regent Street Town Parks	63.3	63.7	64.6	65.1
1563	17 Stanhope Street Town Parks	59.7	60.0	60.1	60.4
1564	?? Stanhope Street Town Parks	60.0	60.2	60.4	60.7
1565	15a Stanhope Street Town Parks	60.1	60.4	60.6	61.0
1566	15 Stanhope Street Town Parks	60.2	60.5	60.8	61.2
1567	13a Stanhope Street Town Parks	60.5	60.8	61.2	61.5
1568	13 Stanhope Street Town Parks	60.9	61.2	61.6	62.0
1569	11a Stanhope Street Town Parks	60.9	61.3	61.7	62.1
1570	9 Regent Street Town Parks	61.9	62.2	62.8	63.3
1571	11 Stanhope Street Town Parks	61.5	61.8	62.3	62.7
1572	Kellys Chemist 24 Clifton Street Town Parks	75.3	75.8	77.2	77.7
1573	The Clifton Newsagency 28 Clifton Street Town Parks	75.3	75.8	77.2	77.7
1574	Finn House Queens Parade Town Parks	58.5	58.9	58.7	59.0
1575	Fianna House Queens Parade Town Parks	60.1	60.5	60.3	60.6
1576	Oisin House Victoria Parade Town Parks	66.4	66.9	66.4	66.9
1577	20 New Lodge Road Town Parks	57.0	57.4	57.3	57.6
1578	18c Pinkerton Walk Town Parks	57.9	58.3	58.2	58.5
1579	6 Moffatt Street Town Parks	62.0	62.3	62.2	62.5
1580	Eithne House Duncairn Parade Town Parks	55.5	55.8	55.6	55.9
1581	Maeve House Duncairn Parade Town Parks	65.3	65.7	65.4	65.7

Ref	Address	Predicted Sound Level, LA10,18h dB			
		2021DM	2035DM	2021DS	2035DS
1582	Clifton Nursing Home 2a Hopewell Avenue Town	78.7	79.3	78.7	79.3
1583	Block A - Bedeque House Annesley Street Town	58.8	59.4	58.8	59.4
1584	Office Bedeque House Annesley Street Town Parks	61.4	61.9	61.4	61.9
1585	Housing With Care Clifton House 4 North Queen	73.8	74.3	75.9	76.6
1586	10-12 Henry Place Town Parks	60.5	61.0	61.4	61.8
1587	44 Lancaster Street Town Parks	66.0	66.4	67.4	67.8
1588	61 Lancaster Street Town Parks	70.9	71.3	71.7	72.1
1589	57 Lancaster Street Town Parks	58.5	58.9	59.0	59.3
1590	42 Lancaster Street Town Parks	63.3	63.6	64.5	64.9
1591	38 Lancaster Street Town Parks	60.5	60.9	61.5	61.9
1592	55 Lancaster Street Town Parks	57.9	58.2	58.4	58.7
1593	51 Lancaster Street Town Parks	58.0	58.4	58.5	58.8
1594	34 Lancaster Street Town Parks	60.1	60.4	61.0	61.4
1595	28 Lancaster Street Town Parks	59.5	59.9	60.0	60.4
1596	22 Lancaster Street Town Parks	60.9	61.2	61.3	61.7
1597	47 Lancaster Street Town Parks	57.8	58.2	58.3	58.6
1598	16 Fishers Court Town Parks	59.1	59.4	59.3	59.6
1599	14 Fishers Court Town Parks	59.2	59.5	59.4	59.7
1600	12 Fishers Court Town Parks	59.4	59.7	59.7	60.0
1601	10 Fishers Court Town Parks	59.6	60.0	60.0	60.3
1602	3 Fishers Court Town Parks	60.1	60.4	60.5	60.8
1603	9 Fishers Court Town Parks	59.0	59.4	59.3	59.6
1604	7 Fishers Court Town Parks	57.5	57.8	58.0	58.4
1605	11 Fishers Court Town Parks	58.9	59.2	59.2	59.5
1606	9 Lancaster Terrace Town Parks	60.4	60.8	60.9	61.3
1607	8 Lancaster Terrace Town Parks	59.1	59.5	59.6	60.0
1608	7 Lancaster Terrace Town Parks	60.5	60.9	61.0	61.4
1609	6 Lancaster Terrace Town Parks	59.9	60.3	60.4	60.8
1610	2 Lancaster Terrace Town Parks	60.6	61.0	61.0	61.4
1611	3 Lancaster Terrace Town Parks	60.7	61.1	61.2	61.6
1612	4 Lancaster Terrace Town Parks	60.7	61.1	61.2	61.6
1613	5 Lancaster Terrace Town Parks	60.7	61.1	61.2	61.5
1614	17 Lancaster Street Town Parks	58.5	58.8	58.4	58.7

Ref	Address	Predicted Sound Level, LA10,18h dB			
		2021DM	2035DM	2021DS	2035DS
1615	69 Carrick Hill Town Parks	74.4	74.9	74.4	74.9
1616	83 Carrick Hill Town Parks	74.2	74.7	74.2	74.7
1617	79 Carrick Hill Town Parks	74.4	74.9	74.4	74.9
1618	Carrick Hill Hostel 8-10 Wall Street Town Parks	57.1	57.4	57.6	57.9
1619	21 Stanhope Street Town Parks	64.3	64.5	64.5	64.7
1620	25 Stanhope Street Town Parks	64.8	65.0	65.0	65.2
1621	29 Stanhope Street Town Parks	59.0	59.2	59.1	59.4
1622	5 Pepperhill Street Town Parks	59.0	59.3	59.1	59.4
1623	3 Pepperhill Street Town Parks	58.4	58.7	58.6	58.9
1624	6 Alton Street Town Parks	57.1	57.4	57.2	57.5
1625	John Blacking House Lower Regent Street Town	56.6	57.0	56.9	57.3
1626	James Cavendish Interiors 47 Little Donegall Street	55.4	55.8	55.5	55.9
1627	32-40 Donegall Street Town Parks	53.1	53.4	53.2	53.6
1628	54 Hill Street Town Parks	60.2	60.5	60.3	60.7
1629	The Salvation Army 2 Victoria Street Town Parks	65.8	66.3	66.2	66.7
1630	Obel Building 64 Donegall Quay Town Parks	64.1	64.4	64.2	64.5
1631	43 Queens Square Town Parks	55.0	55.4	55.1	55.4
1632	Paul Brennan & Co 44 Hill Street Town Parks	56.1	56.5	56.1	56.5
1633	2 Pilot Place Town Parks	57.4	57.8	57.4	57.7
1634	10a Clarendon Road Town Parks	58.8	59.1	58.8	59.1
1635	42 Pilot Street Town Parks	57.9	58.2	58.0	58.3
1636	26 St. Pauls Fold Town Parks	57.0	57.4	57.2	57.5
1637	25 St. Pauls Fold Town Parks	58.1	58.5	58.1	58.5
1638	23 St. Pauls Fold Town Parks	57.6	57.9	57.6	58.0
1639	22 St. Pauls Fold Town Parks	57.7	58.0	57.7	58.1
1640	21 St. Pauls Fold Town Parks	57.9	58.3	58.0	58.3
1641	20 St. Pauls Fold Town Parks	58.0	58.3	58.0	58.4
1642	19 St. Pauls Fold Town Parks	56.1	56.5	56.1	56.5
1643	18 St. Pauls Fold Town Parks	60.2	60.5	60.1	60.5
1644	17 St. Pauls Fold Town Parks	55.9	56.3	55.9	56.3
1645	16 St. Pauls Fold Town Parks	55.5	55.9	55.6	55.9
1646	15 St. Pauls Fold Town Parks	56.9	57.3	56.9	57.3
1647	14 St. Pauls Fold Town Parks	58.7	59.0	58.8	59.1
1648	11 St. Pauls Fold Town Parks	57.4	57.9	57.5	57.9

Ref	Address	Predicted Sound Level, LA10,18h dB			
		2021DM	2035DM	2021DS	2035DS
1649	10 St. Pauls Fold Town Parks	57.7	58.2	57.8	58.2
1650	9 St. Pauls Fold Town Parks	58.1	58.6	58.2	58.6
1651	3 St. Pauls Fold Town Parks	56.0	56.4	56.1	56.4
1652	1 St. Pauls Fold Town Parks	58.4	58.8	58.5	58.8
1653	2 St. Pauls Fold Town Parks	55.9	56.2	55.9	56.3
1654	13 Bentinck Street Town Parks	70.0	70.5	70.3	70.8
1655	15 Bentinck Street Town Parks	69.2	69.7	69.4	69.8
1656	35 Bentinck Street Town Parks	69.3	69.7	69.5	70.0
1657	37 Bentinck Street Town Parks	67.5	68.0	67.8	68.2

**APPENDIX 13: NOISE & VIBRATION****Annex B: High Demand Growth Scenario**

## ANNEX B - HIGH DEMAND GROWTH SCENARIO

In addition to the assessment based on central traffic growth, presented in the York Street Interchange Noise & Vibration ES chapter, a further assessment based on high demand traffic growth data has been carried out. The results of the assessment are presented here.

Table 13B.1 is based on the façade at each building which undergoes the worst change in traffic noise level from the Do-Minimum 2021 scenario to the Do-Minimum 2035 scenario.

**Table 13B.1:** Long-term Change in Traffic Noise Levels (DM2021 to DM2035)

Change in noise level		Daytime		Night time
		Number of dwellings	Number of other sensitive receptors	Number of dwellings
Increase in noise level Daytime $L_{A10,18h}$ dB Night-time $L_{night,outside}$ dB	0.1-2.9	1646	44	362
	3.0-4.9	0	0	0
	5.0-9.9	0	0	0
	10+	0	0	0
No Change	0	0	0	0
Decrease in noise level Daytime $L_{A10,18h}$ dB Night-time $L_{night,outside}$ dB	0.1-2.9	0	0	0
	3.0-4.9	0	0	0
	5.0-9.9	0	0	0
	10+	0	0	0

Table 13B.2 summarises the short-term change in traffic noise levels in 2021 between the Do-Minimum and Do-Something scenarios at both residential properties and other sensitive receptors within the 400m study area for central growth. As with central traffic growth, all residential properties are predicted to experience a negligible increase in traffic noise levels from 2021 to 2035, under the Do-Minimum scenario.

**Table 13B.2:** Short-Term Traffic Noise Changes (DM2021 to DS2021)

Change in noise level		Daytime	
		Number of dwellings	Number of other sensitive receptors
Increase in noise level Daytime $L_{A10,18h}$ dB Night-time $L_{night,outside}$ dB	0.1-0.9	1394	35
	1.0-2.9	81	6
	3.0-4.9	0	0
	$\geq 5$	0	0
No Change	0	117	3
Decrease in noise level Daytime $L_{A10,18h}$ dB Night-time $L_{night,outside}$ dB	0.1-0.9	46	0
	1.0-2.9	8	0
	3.0-4.9	0	0
	$\geq 5$	0	0

With reference to Table 13B.2, approximately 85% of residential properties are predicted to experience a negligible increase, approximately 5% are predicted to experience a minor increase, approximately 10% are predicted to experience no change, and approximately 3% experience a negligible or minor decrease in short-term noise levels. For non-residential sensitive receptors, approximately 79% would experience a negligible increase, approximately 14% would experience a minor increase and approximately 7% would experience no change in short-term noise levels.

**Table 13B.3** summarises the long-term change between the Do-Minimum 2021 and Do-Something 2035 scenarios. All the comparisons are based on the façades which experiences the worst case change in traffic noise levels for that comparison.

**Table 13B.3:** Long-Term Traffic Noise Changes (DM2021 to DS2035)

Change in noise level		Daytime		Night time
		Number of dwellings	Number of other sensitive receptors	Number of dwellings
Increase in noise level Daytime $L_{A10,18h}$ dB Night-time $L_{night,outside}$ dB	0.1-2.9	1618	44	324
	3.0-4.9	0	0	0
	5.0-9.9	0	0	0
	10+	0	0	0
No Change	0	7	0	11
Decrease in noise level Daytime $L_{A10,18h}$ dB Night-time $L_{night,outside}$ dB	0.1-2.9	21	0	27
	3.0-4.9	0	0	0
	5.0-9.9	0	0	0
	10+	0	0	0

With reference to Table 13B.3, approximately 98% of residential properties are predicted to experience a negligible increase and approximately 2% are predicted to experience no change or a negligible decrease in long-term traffic noise levels. For non-residential sensitive receptors, all are predicted experience a negligible increase in long-term traffic noise levels.

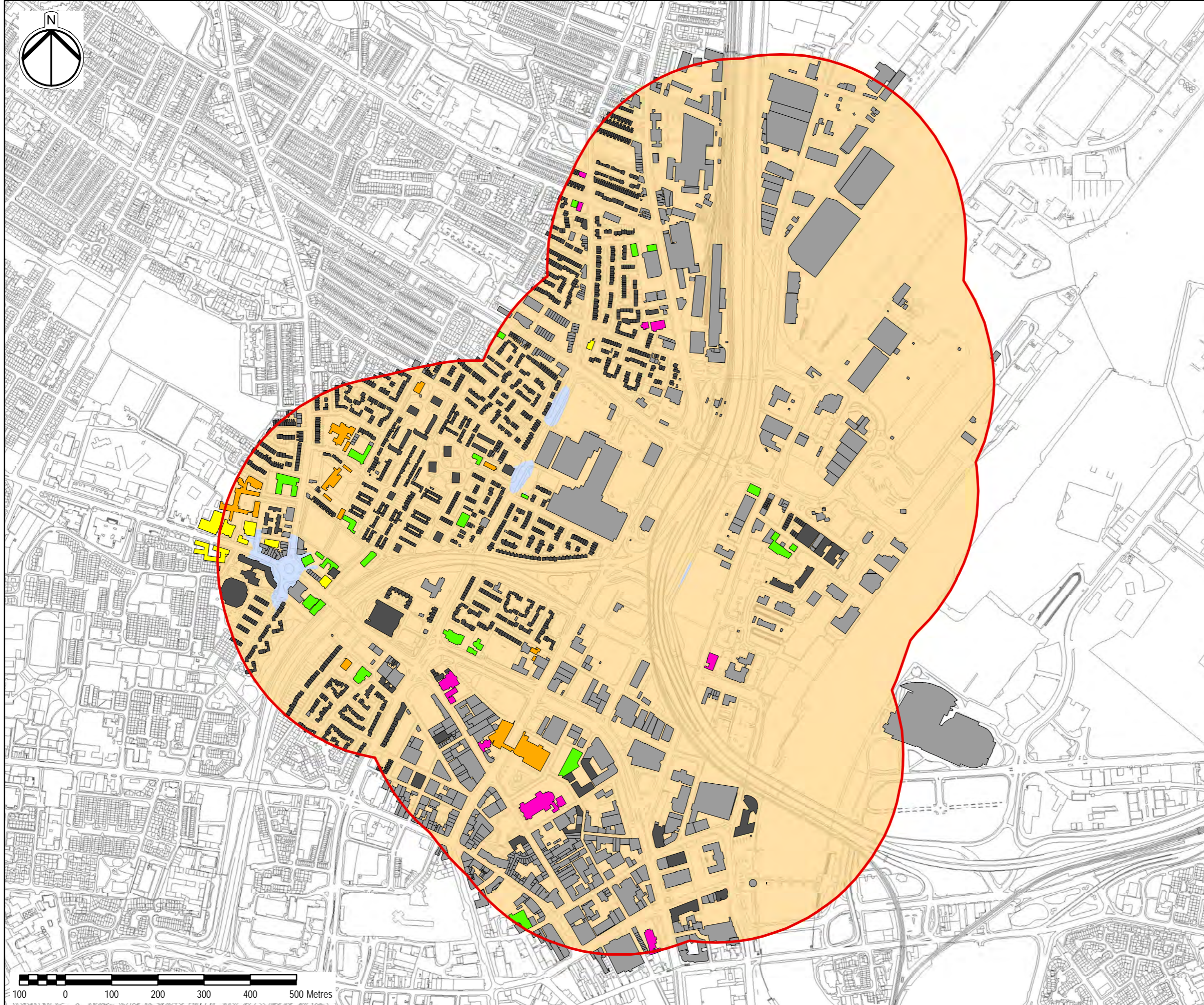
With reference to Table 13B.3, long-term changes in night-time noise levels show a similar pattern to the daytime changes, albeit with significantly fewer properties included in the assessment.

**Table 13B.4** provides the worst case change (within 15 years of opening of the Scheme) in traffic noise nuisance. Column 3 of the table shows the changes in nuisance if the Scheme did not go ahead and column 4 of the table shows the changes in nuisance if the Scheme did go ahead.

**Table 13B.4: Worst Case Change in Traffic Noise Nuisance**

Change in noise level		Do Minimum	Do Something
		Number of dwellings	Number of dwellings
Increase in nuisance level	<10%	1646	743
	10<20%	0	781
	20<30%	0	94
	30<40%	0	0
	≥40%	0	0
No Change	0	0	7
Decrease in nuisance level	<10%	0	21
	10<20%	0	0
	20<30%	0	0
	30<40%	0	0
	≥40%	0	0

Examination of Table 13B.4 shows that, for the Do-Minimum changes, all residential properties would experience an increase in nuisance. For the Do-Something changes, the situation is similar, with 99% of residential properties experiencing an increase in nuisance or no change, and a small number with a <10% decrease.



Project Title  
**YORK STREET INTERCHANGE**

Client  
**transportni**

Drawing Title  
**NOISE AND VIBRATION**

Long Term Traffic Noise Change  
 2021DM TO 2035DM High Growth

KEY

- 400m Buffer of Proposed Scheme
- Residential Buildings
- Non-Residential Buildings

Non-Residential Sensitive Receptors

- Places of Worship
- Community Facility (Other)
- Health Facility
- Education Facility

2021DM TO 2035DM HIGH GROWTH

- > -5.0 to <= 3.0
- > -3.0 to <= -1.0
- > -1.0 to <= 0.0
- > 0.0 to <= 1.0
- > 1.0 to <= 3.0
- > 3.0 to <= 5.0
- > 5.0 to <= 10.0

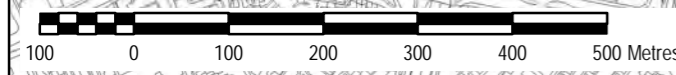
Scale @ A3  
 1:8,000

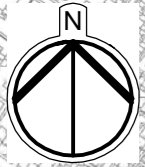
This document has been prepared pursuant to and subject to the terms of URS' appointment by its client. URS accepts no liability for any use of this document other than by its original client or following URS' express agreement to such use, and only for the purposes for which it was prepared and provided.

This material is based upon Crown Copyright and is reproduced with the permission of Land & Property Services under delegated authority from the controller of Her Majesty's Stationery Office.  
 © Crown Copyright and database rights NIMA ES&LA214.  
 Unauthorised reproduction infringes © Crown Copyright and may lead to prosecution or civil proceedings.

**FIGURE 13A.1**

URS Infrastructure & Environment UK Limited  
 Beechill House  
 Beechill Road, Belfast  
 BT8 7RP  
 T: +44 (0)28 9070 5111  
 F: +44 (0)28 9079 5651  
[www.ursglobal.com](http://www.ursglobal.com)



Project Title  
**YORK STREET INTERCHANGE**

Client  
**transportni**

Drawing Title  
**NOISE AND VIBRATION**

Short Term Traffic Noise Change  
 2021DM TO 2021DS High Growth

- KEY
- Proposed Scheme
  - Proposed Noise Barrier
  - 400m Buffer of Proposed Scheme
  - Non-Residential Buildings
  - Residential Buildings
  - Non-Residential Sensitive Receptors
    - Places of Worship
    - Community Facility (Other)
    - Health Facility
    - Education Facility
  - Changes to 2021DM H<sub>CM</sub> (dB(A))
    - > -5.0 to <= 3.0
    - > -3.0 to <= -1.0
    - > -1.0 to <= 0.0
    - > 0.0 to <= 1.0
    - > 1.0 to <= 3.0
    - > 3.0 to <= 5.0
    - > 5.0 to <= 10.0

Scale @ A3  
 1:8,000

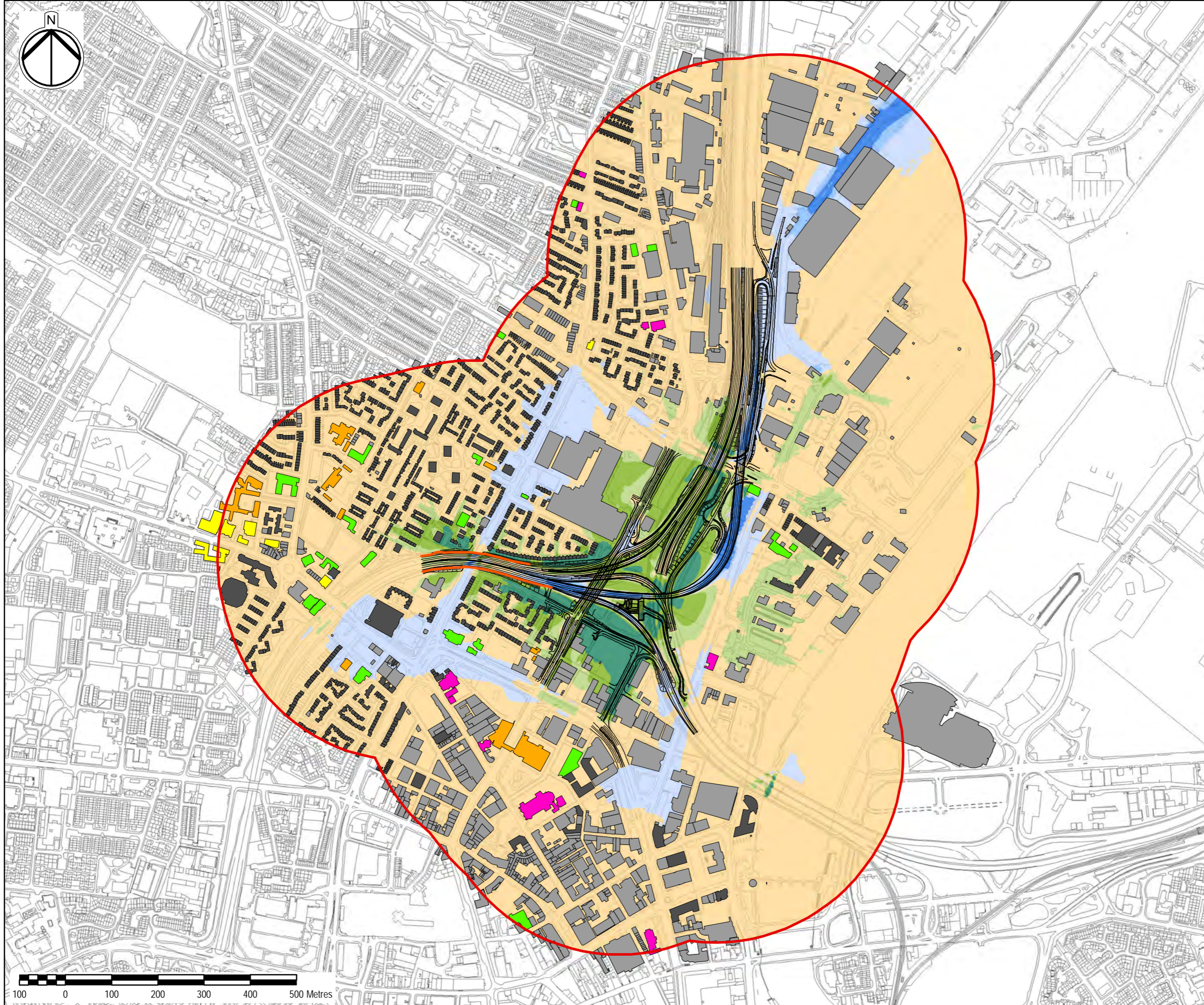
This document has been prepared pursuant to and subject to the terms of URS' appointment by its client. URS accepts no liability for any use of this document other than by its original client or following URS' express agreement to such use, and only for the purposes for which it was prepared and provided.

This material is based upon Crown Copyright and is reproduced with the permission of Land & Property Services under delegated authority from the controller of Her Majesty's Stationery Office.  
 © Crown Copyright and database rights NIMA ES&LA214.  
 Unauthorised reproduction infringes © Crown Copyright and may lead to prosecution or civil proceedings.

**FIGURE 13A.2**

URS Infrastructure & Environment UK Limited  
 Beechill House  
 Beechill Road, Belfast  
 BT8 7RP  
 T: +44 (0)28 9070 5111  
 F: +44 (0)28 9079 5651  
[www.ursglobal.com](http://www.ursglobal.com)



Project Title  
**YORK STREET INTERCHANGE**

Client  
**transportni**

Drawing Title  
**NOISE AND VIBRATION**

Long Term Traffic Noise Change  
 2021DM TO 2035DS High Growth

- KEY
- Proposed Scheme
  - Proposed Noise Barrier
  - 400m Buffer of Proposed Scheme
  - Residential Buildings
  - Non-Residential Buildings
- Non-Residential Sensitive Receptors
- Places of Worship
  - Community Facility (Other)
  - Health Facility
  - Education Facility
- Change in L<sub>AD</sub> (dB (A) (cont'd))
- > -5.0 to <= 3.0
  - > -3.0 to <= -1.0
  - > -1.0 to <= 0.0
  - > 0.0 to <= 1.0
  - > 1.0 to <= 3.0
  - > 3.0 to <= 5.0
  - > 5.0 to <= 10.0

Scale @ A3  
 1:8,000

This document has been prepared pursuant to and subject to the terms of URS' appointment by its client. URS accepts no liability for any use of this document other than by its original client or following URS' express agreement to such use, and only for the purposes for which it was prepared and provided.

This material is based upon Crown Copyright and is reproduced with the permission of Land & Property Services under delegated authority from the controller of Her Majesty's Stationery Office.  
 © Crown Copyright and database rights NIMA ES&LA214.  
 Unauthorised reproduction infringes © Crown Copyright and may lead to prosecution or civil proceedings.

**FIGURE 13A.3**

URS Infrastructure & Environment UK Limited  
 Beechill House  
 Beechill Road, Belfast  
 BT8 7RP  
 T: +44 (0)28 9070 5111  
 F: +44 (0)28 9079 5651  
[www.ursglobal.com](http://www.ursglobal.com)

